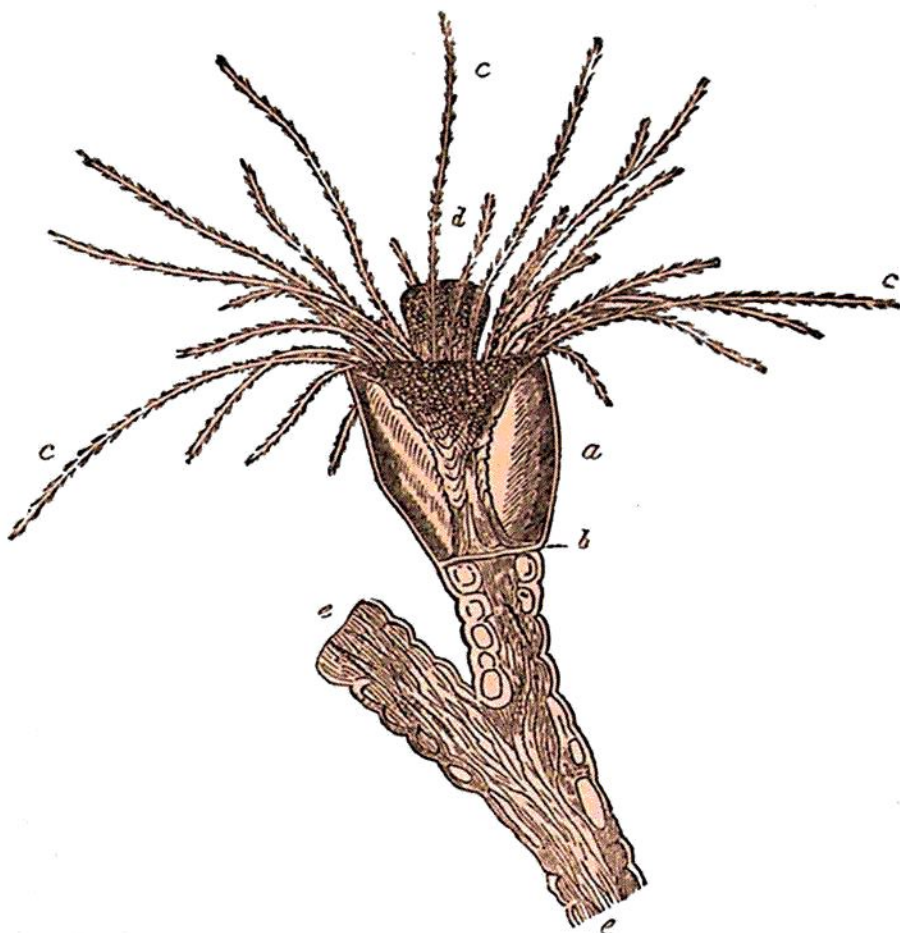


the common medullary pulp is retained, (Fig. 9, *b*.) * Besides the cells there are found, at certain seasons, a larger sort of vesicles, readily distinguished from the others by their size and the irregularity of their distribution.—The more robust tribes grow erect, and, being flexible and elastic, yield readily to the waves and currents; but some of the very delicate species avoid a shock for which they are unequal by creeping along the surface.

Fig. 9.



The polypidoms, when dried, are for the most part of a yellowish or horn colour. “When they are immersed in water, they recover the same form they appeared in when fresh in the sea; and soon become filled with the liquid. This gives them a semitransparent amber colour, and makes them very elastic.”† Their material appears to be analogous to horn or condensed

* Lister, in *Phil. Trans.* 1834, p. 371.

† Ellis, *English Corallines*, p. 3.