

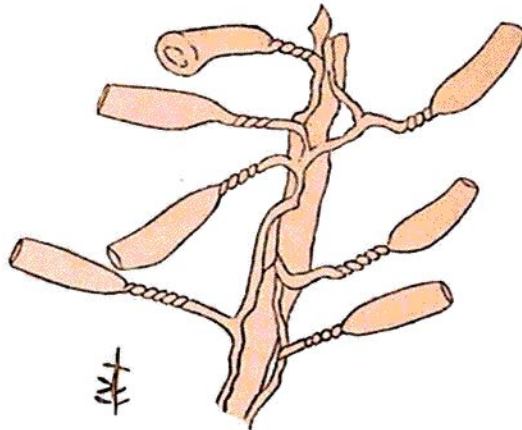
34.—*S. uniflora*, *Pall.* Elench. 121. *Ellis*, in *Phil. Trans.* lvii. 437, pl. 19, fig. 9.—*Clytia volubilis*, *Lamour.* Cor. Flex. 202. Corall. 88. *Campanularia volubilis*, *Lam.* Anim. s. Vert. ii. 113. 2deedit. ii. 132. *Flem.* Brit. Anim. 548. *Risso*, L'Europ. mérid. v. 309. *Johnston* in *Trans. Newc. Soc.* ii. 255. *Templeton*, in *Mag. Nat. Hist.* ix. 466.—*La Campanulaire grimpante*, *Blainv.* Actinolog. 472, pl. 84, fig. 2.

*Hab.* Parasitical on other corallines, frequent. Brighthelmstone, on the coast of Sussex, *Ellis*. Frith of Forth, adhering to *Flustræ* and *Fuci*, *Jameson*. Berwick Bay, *G. J.* Found in Belfast Lough, *Templeton*. On specimens of *Sertularia tamarisca*, &c. from Scarborough, *Bean*.

A minute species, and a beautiful object for the microscope. I have seen the antennæ of a crab (*Lithodes spinosa*) so profusely invested with this zoophyte as to resemble hairy brushes. The coralline in this instance had chosen a station by which it obtained all the benefits of locomotion. Our figure represents a specimen which had adorned in a similar manner the remnant of a *Plumularia falcata*. The stem is a capillary corneous tube which creeps and twists itself upon its support, throwing out, at alternate intervals, a long slender stalk twisted throughout or only partially, that supports a bell-shaped cup of perfect transparency and prettily serrulated round the brim. The ovarian vesicles arise from the creeping tube, are sub-pedicellate, ovate, coarsely wrinkled, and contain each several ova. Polypes with numerous slender white tentacula.

2. *C. SYRINGA*, stem creeping, capillary; cells on shorter twisted pedicles, tubulous, with a plain margin. *Ellis*.

Fig. 18.



Creeping Bell-Coralline, *Ellis*, Corall. 25, pl. 14, fig. b, B.—*Sertularia syringa*, *Lin.* Syst. 1311. *Berk.* Syn. i. 218. *Turt.* Gmel. iv. 680. *Turt.* Brit. Faun. 214. *Stew.* Elem. ii. 444. *Bosc.* Vers, iii. 113.—*S. volubilis*, *Pall.* Elench. 122.—*S. repens*, *Ellis* and *Soland.* Zooph.