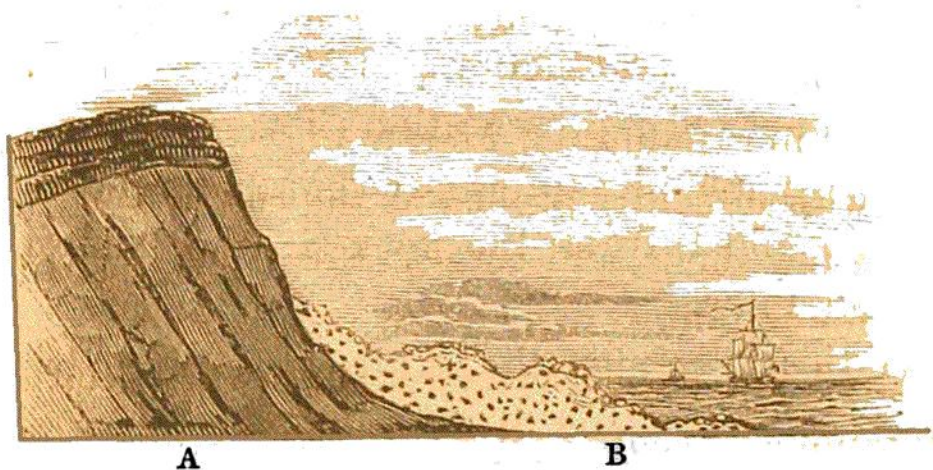


species of fresh-water shells, and masses of that common lacustrine plant, the *Chara medicaginula*, beautifully preserved; even the minute seed-vessels of the chara are found converted into stone, in precisely the same manner as those which occur in the ancient fresh-water tertiary limestones. Here then is an example of the formation of a modern lacustrine rock; while, in the deposits at Bermuda, we have proof that the sea is, at this time, producing effects analogous to those which have given rise to many of the ancient secondary strata.

52. FOSSIL HUMAN SKELETONS OF GUADALOUPE.—Similar formations are in progress along the shores of the whole West Indian Archipelago; and in St. Domingo they have greatly extended the plain of Cayes, where accumulations of conglomerates occur, and in which, at the depth of twenty feet, fragments of ancient pottery have been discovered.



TAB. 9.—PLAN OF THE CLIFFS AT GUADALOUPE.

A, Ancient rocks; B, recent limestone, in which human skeletons are found imbedded.

On the north-east coast of the main land of Gua-