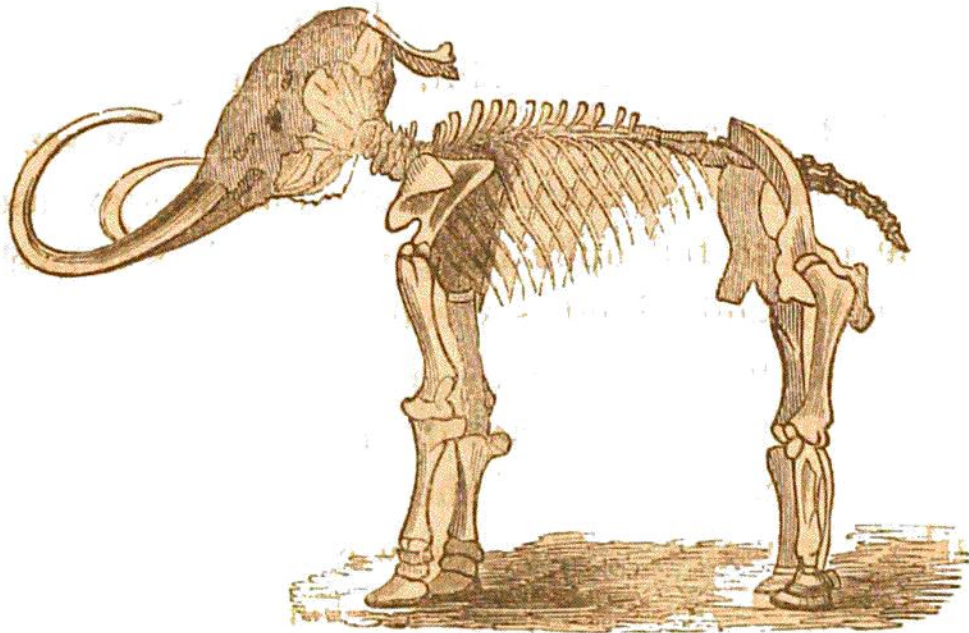


interest, that I must indulge in a few additional remarks. The existing elephants belong to two species, namely, the African, which occurs as far south as the Cape of Good Hope, and the Asiatic,



TAB. 23.—MAMMOTH FOUND IMBEDDED IN FROZEN GRAVEL IN SIBERIA.

(Twelve feet high, and sixteen feet long.)

which is limited to 31° north latitude. They are distinguished by certain characters; but those which more especially relate to our present inquiry, are the peculiarities of the teeth.

19. TEETH OF RECENT, AND FOSSIL ELEPHANTS. —The teeth of animals are formed of three distinct substances, which are variously disposed in different orders, according to the habits and economy of the species; a fact to which I alluded when treating of the anatomical character of those of the rodentia, &c. The nucleus of the tooth is composed of a bony matter, consisting almost entirely of phosphate of