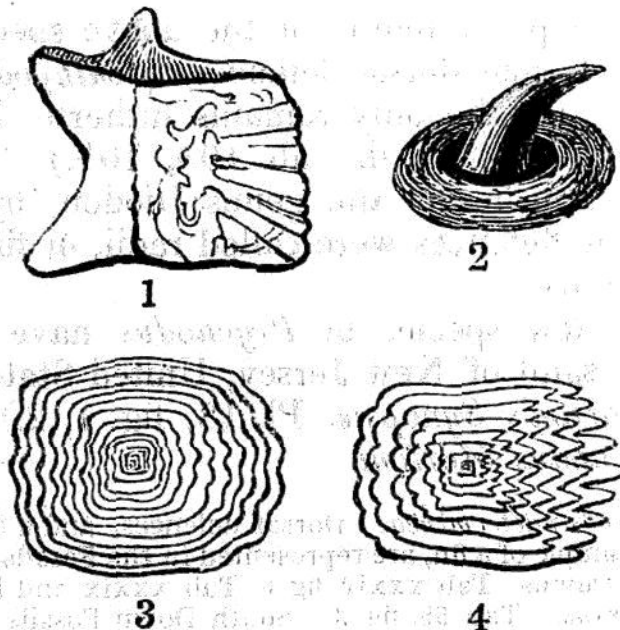


tions of modiolæ, and other indications of a water-level four feet above the present sea, are observable on the sixth pier of the bridge of Caligula; and again on the twelfth pier, at the height of ten feet. A line of perforations by modiolæ is visible in a cliff opposite the island of Nisida, thirty-two feet above the present level of the Mediterranean.—*Abstract of the Proceedings of the Geological Society; March, 1834.*

H. Page 325.—Mr. Reade's recent observations on fossil infusoria are embodied in Lecture VI. See also *Appendix N and O.*

I. Page 328.—AGASSIZ'S CLASSIFICATION OF FISHES.



TAB. 84.—SCALES OF THE FOUR ORDERS OF FISHES, AS DETERMINED BY M. AGASSIZ.

1. Scale of a *Ganoid* order—of *Lepidotus*.
2.     "     *Placoid* order—of *Ray*.
3.     "     *Cycloid* order—of *Salmon*.
4.     "     *Ctenoid* order—of *Beryx*.