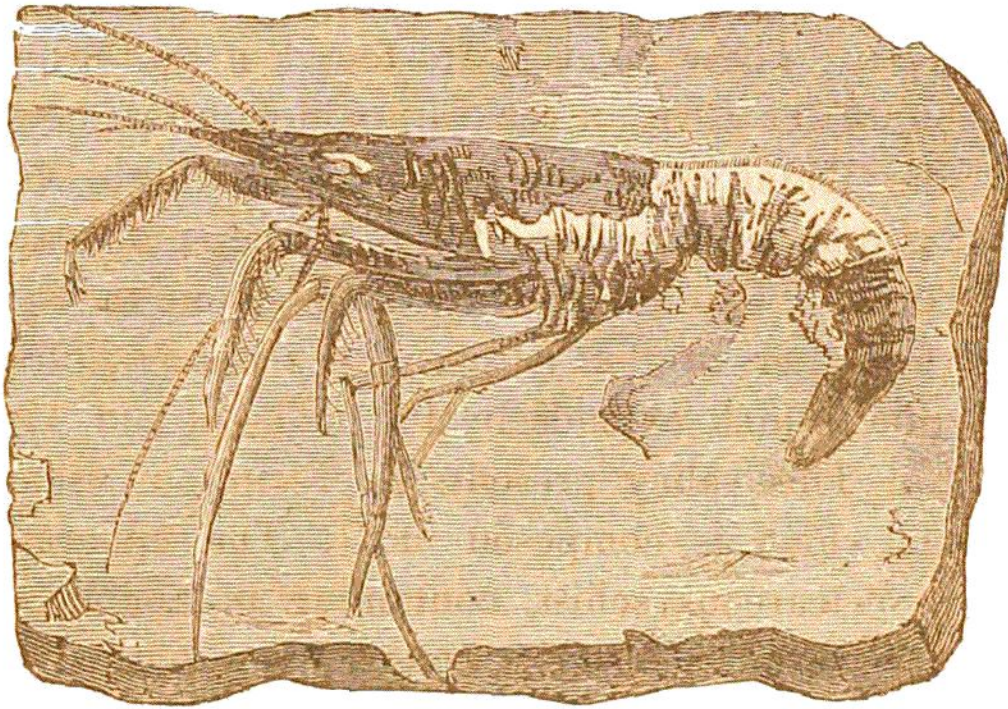


Catastrophes que le Globe terrestre a essuié," contains coloured representations of crabs, *astacida*, &c. The fossil prawn here figured shows the extraordinary state of preservation of these remains. A



TAB. 87.—FOSSIL PRAWN, FROM PAPPENHEIM.

(*Palaemon spinipes*.)

saurian, about three feet in length, allied to the crocodile, and numerous flying reptiles, have been found at Solenhofen; and Count Munster has collected seven species of pterodactyles, six saurians, three tortoises, sixty species of fish, forty-six of crustacea, and twenty-six of insects. The number of testacea is comparatively small, as also of plants, which are all marine. The cabinet of Mrs. Murchison contains a beautiful *libellula*, or dragon-fly, from Solenhofen.\* Mr. De la Beche remarks, that

\* Geological Manual, p. 372.