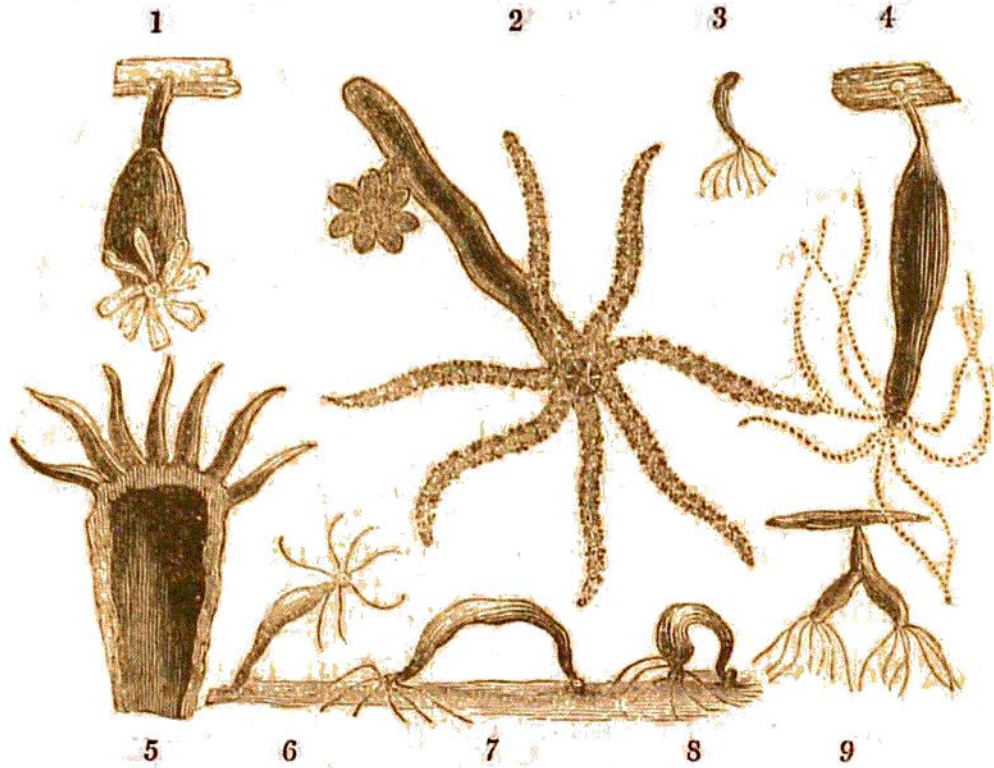


fixes itself to other bodies by the small end of the tube, and expands and contracts itself at pleasure. These enlarged drawings (Tab. 98) of the polypes in different states of contraction and motion,



TAB 98.—FRESH-WATER POLYPES.

(Drawn by Miss Ellen Maria Mantell.)

Fig. 1. *Hydra fusca* magnified, the tentacula partially expanded. 2. Two hydræ on the same tube, one contracted, the other expanded. 3. *Hydra viridis*, natural size. 4. Hydra, with the body enlarged from its containing food. 5. Vertical section of *hydra viridis*, highly magnified. 6, 7, 8. Hydræ in various states of progression. 9. A double hydra, produced by the vertical section of a single polype.

will render a detailed description unnecessary. The mode of progression is shown in figs. 6, 7, 8; it is effected by the bending of the body into a curve, and holding by the tentacula; the base is then brought into contact with the fixed point, and the tentacula are again projected forwards. The animal