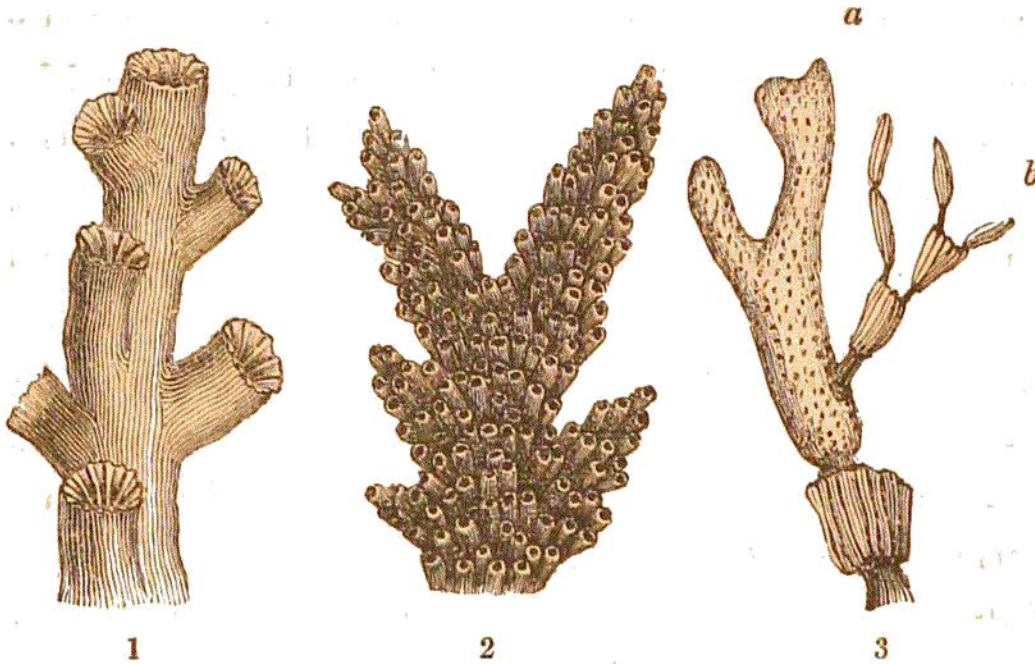


the surface being covered with a green fleshy substance, beset with stellular animalcules.



TAB. 102.—RECENT CORALS.

Fig. 1. A branch of *Oculina ramea*. 2. A branch of *Madrepora muricata*. 3. A branch of *Isis hippuris*; *a*, the cortical substance covered with pores which are the cells of polypi; *b*, a branch deprived of its outer covering, and exposing the articulated axis or stem.

21. MADREPORE (Tab. 102).—In the red coral, no cells are formed on the skeleton to serve as a protection to the polypi; but in the family of branched, or arborescent, calcareous polyparia, called *madrepores*, the little cups or cells, with radiating lamellæ, in which the polypi are situated, are composed of the substance of the skeleton. When the animals die, and the outer fleshy investment perishes, the axis is seen to be studded over with elegant, lamellated, stellular cells, variously formed and arranged, in different genera and species. In