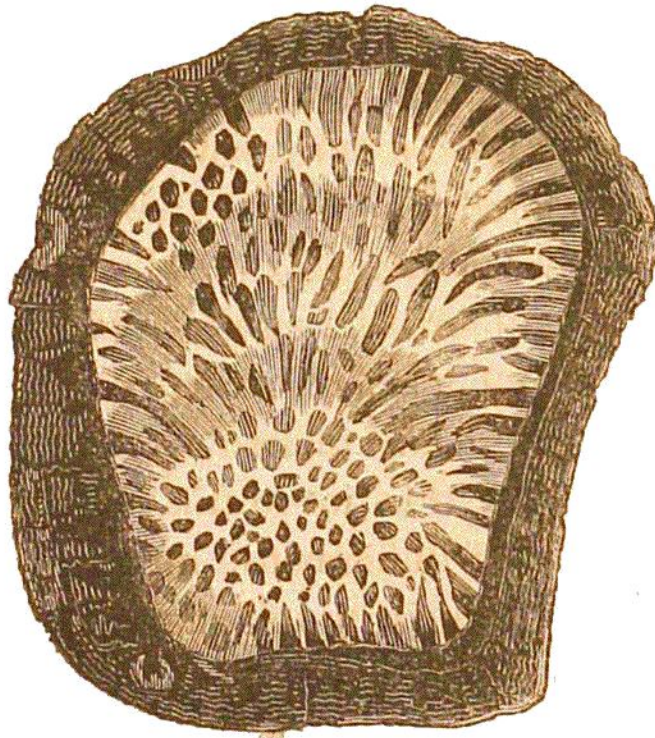


A curious form of tubipore occurs in the Dudley limestone, which from the appearance of the sections of the tubes, has received the name of chain-coral (Tab. 112, fig. 3). The tubes of this species are oval, and arranged perpendicularly side by side, in undulating lines; transverse sections, therefore, give rise to elegant markings on the surface, resembling delicate chain work. This tubipore is only found in the ancient rocks.



TAB. 113.—CARYOPHYLLIA, IN A POLISHED PEBBLE, FROM TORQUAY.

*(Drawn by Miss Jane Allnut.\*)*

The pebbles that are thrown by the waves upon the shore near Torquay, on the coast of Devonshire,

\* From a beautiful specimen in the possession of Mrs. Allnut, of Clapham Park.