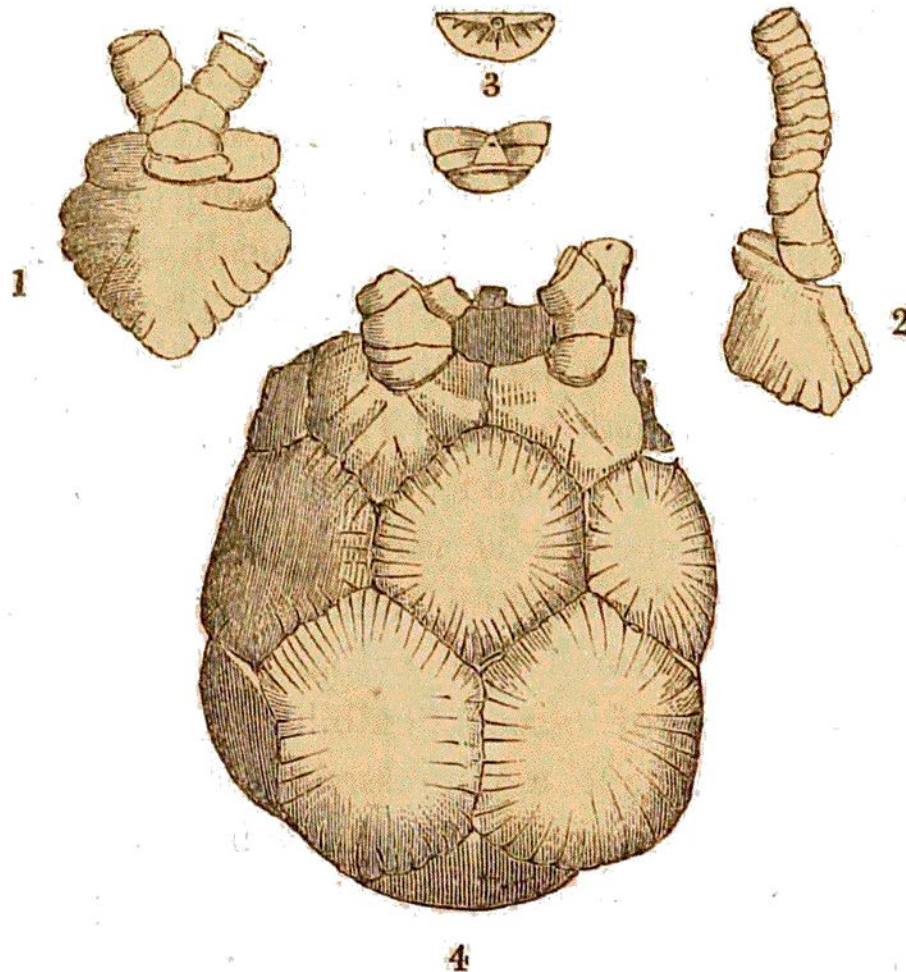


In another specimen, the plates which protected the upper cavity of the pelvis remain.* The marsupite



TAR. 116.—MARSUPITE FROM THE CHALK, NEAR ARUNDEL.

(Drawn, and presented by G. A. Coombe, Esq.)

Fig. 1. A plate with one of the arms or tentacula attached. 2. Lateral view of one of the arms. 3. The ossicula by which the arms are attached to the body. 4. The marsupite, with the first five ossicula of two of the arms.

may be considered as a free encrinus—a link that unites the crinoidea with the star-fish; the form of

* Fossils of the South Downs, Plate XVI. fig. 6.