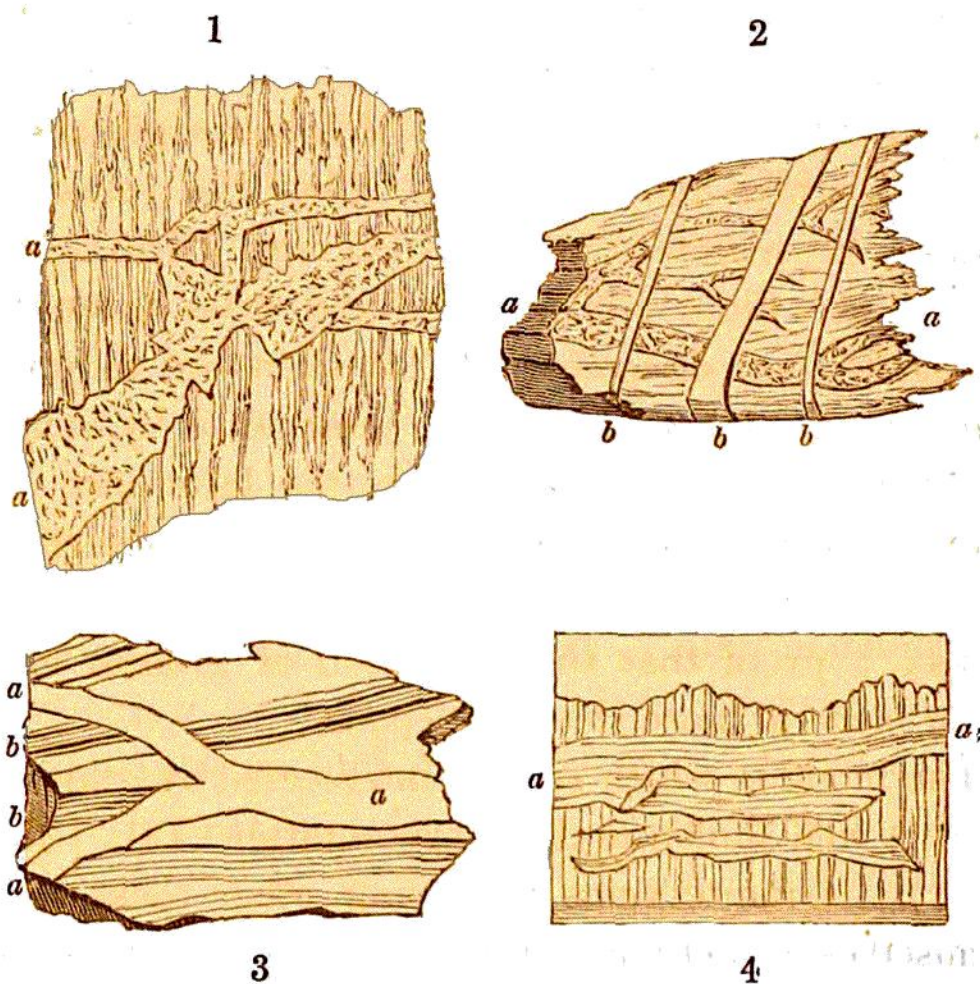


Cambrian, Silurian, carboniferous, oolitic, cretaceous (see Pl. 8, fig. VII.), and even tertiary epochs.



TAB. 151.—INTRUSIONS OF TRAP, GRANITE, PORPHYRY, &c. ISLE OF ARRAN.

Fig. 1. Granite veins (*a a*) traversing schist.\* 2. Veins of granite (*a a*), traversing schist, themselves crossed by veins (dikes) of two different kinds of porphyry (*b b b*). 3. Gneiss, shifted by a granite vein (*a a a*). 4. Intrusion of trap between layers of sandstone (*a a*) presenting an example of fracture and displacement so small, as to admit of the readaptation of the separated portions.†

Where granite has been erupted among the secondary strata, the latter, as we have already remarked, are

\* Phillips, *Encycl. Metrop.*

† Dr. MacCulloch, *Geolog. Trans. and Western Isles.*