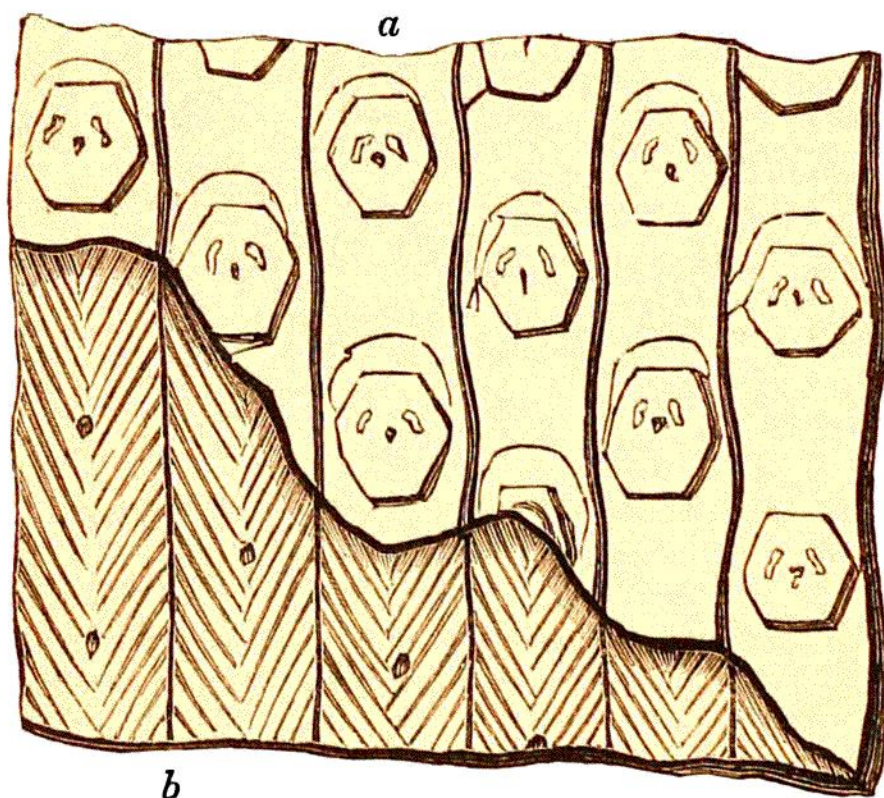


stems, have been observed. The subjoined sketches (*Lign.* 24 and 25) illustrate the usual characters of these fossils. The difference between the imprints on the outside of the bark, and those on the exposed stem, by the removal of the cortical covering (*Lign.* 25.), will not escape the notice of the reader.



LIGN. 25.

SIGILLARIA SAULLII.

*Carb. Manchester.*

*a.* The external imprints of the petioles.

*b.* The inner surface, exposed by the removal of the crust of carbonized bark.

INTERNAL ORGANIZATION OF THE SIGILLARIÆ.—  
Our knowledge of the structure of this numerous and interesting tribe of plants, has received an important accession, by the discovery of the silicified