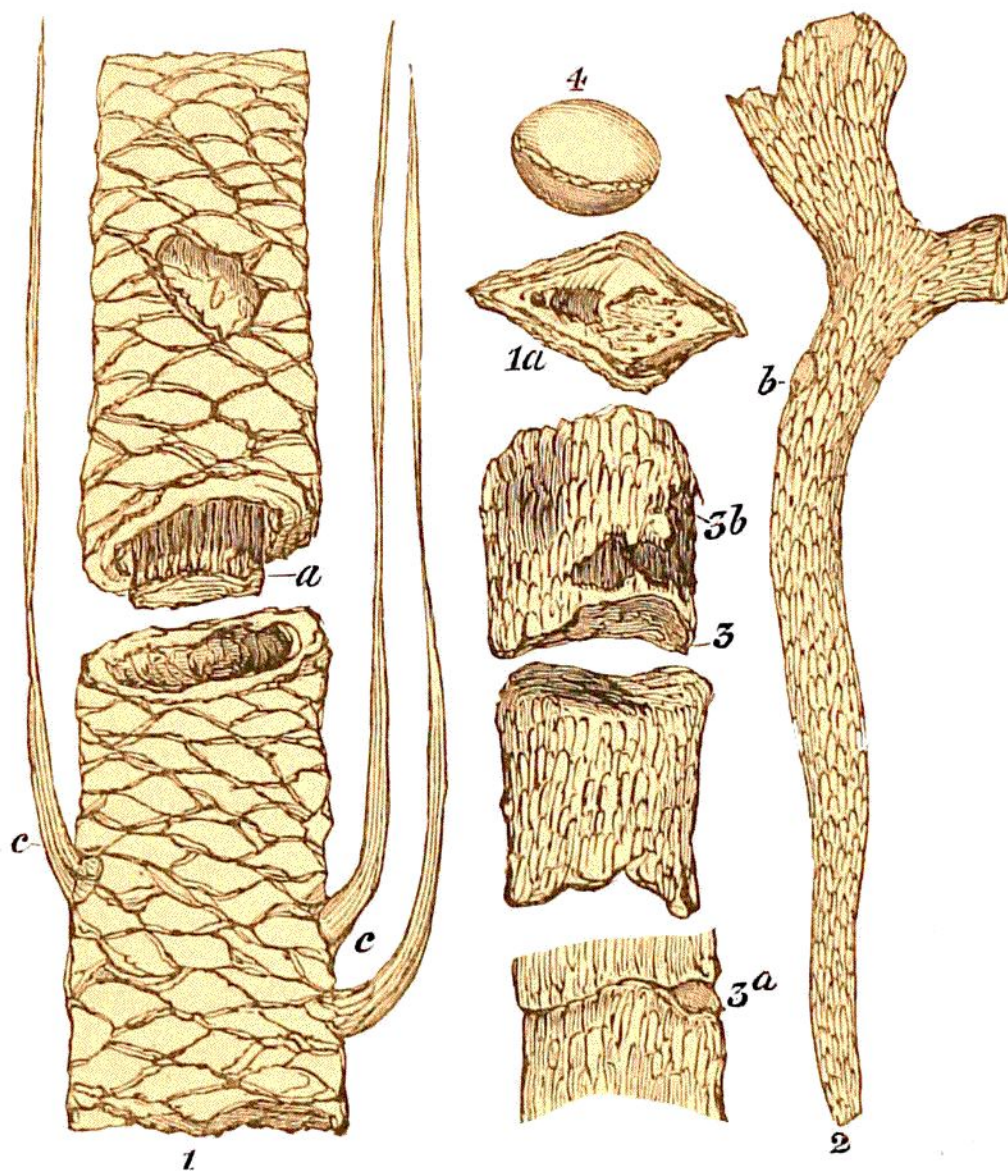


irregularity of form, the shape varying from a true rhomboid to an elongated lozenge. The outer por-



LIGN. 44. CLATHRARIA LYELLII. (G. A. M.) *Tilgate Forest.*

Fig. 1.—A stem, with rhomboidal transverse scars, left by the petioles; broken and separated, to show the internal axis at *a*, which, if the pieces were united, would be received in the cavity below. The depression, or cicatrix, on the middle of the upper portion, *b*, was probably the situation of a resinous secretion, like the dragon-blood in the *Dracæna*: *b*, in fig. 2, shows a similar spot. The outlines, *c c*, point out the form and mode of attachment of the leaves, as shown in some specimens imbedded in stone and clay.