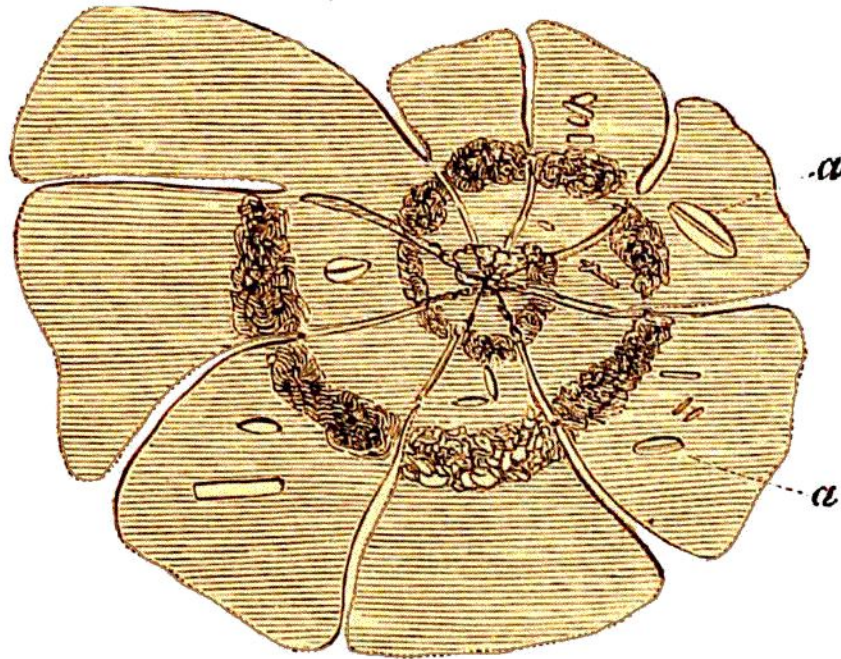


2, 3, 6, represent different species, from the chalk and flint of Surrey.

To illustrate the nature of these specimens, the figure of a recent marine Polythalamian, from Cuxhaven, is annexed (*Lign.* 50.), which M. Ehrenberg



LIGN. 50. NONIONINA GERMANICA, \times 290.

A recent polythalamian animal, from the North Sea, near Cuxhaven. In some of the chambers, (*a, a,*) naviculæ, and other infusoria swallowed by the animalcule, are seen. (Ehrenberg.)

considers to be intimately related to the Rotalina. The body of this animal is enclosed in the shell, and occupies not only the outer chamber, but also all the cells contemporaneously. The shell is pierced all over with minute pores, like a sieve, through which tentacula protrude: it has also several long,