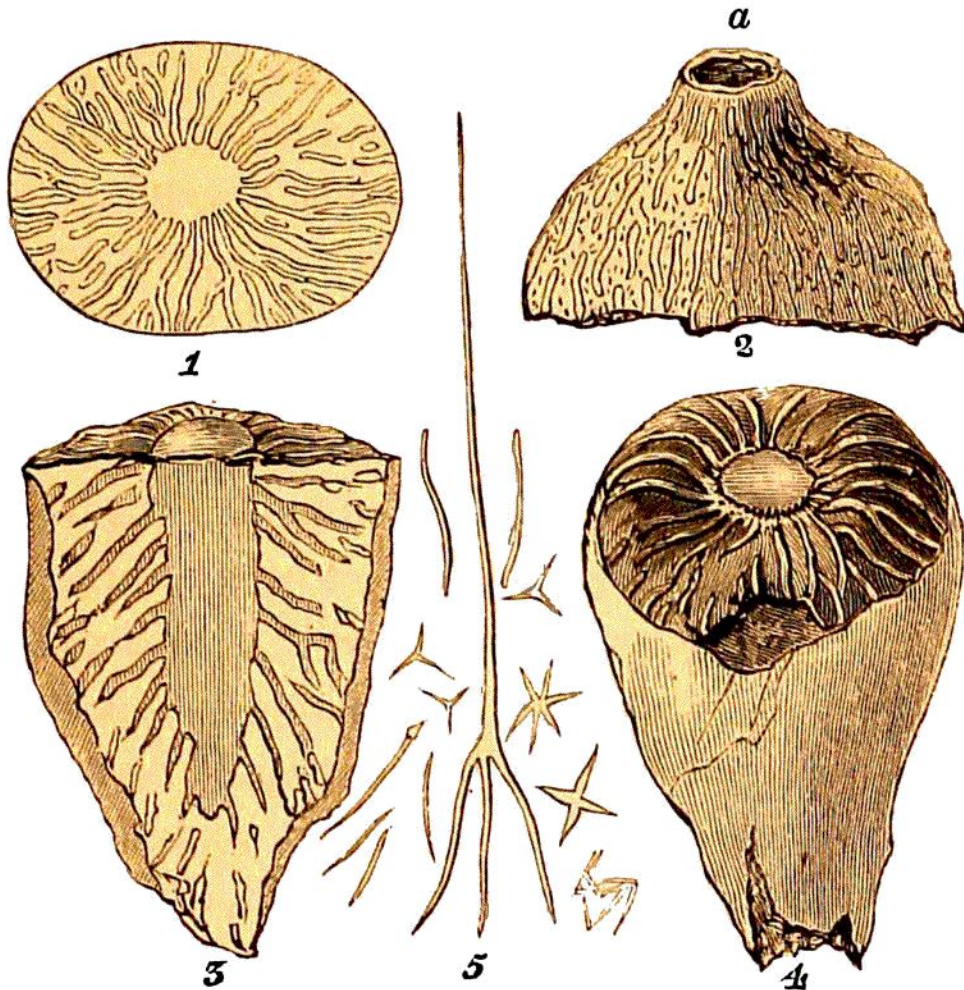


The fossils which I have placed under this genus,* are closely related to a recent zoophyte (*Alcyonium*



LIGN. 58. CHOANITES KÖNIGL. (G. A. M.) Chalk, Lewes.

Fig. 1.—Transverse section of a siliceous specimen.

2.—Upper portion of a *Choanite*, in chalk, showing the mouth or opening into the ventral cavity at *a*.

3.—Vertical section of a *Choanite*, in flint, exposing a section of the body, and tubes passing obliquely from the central cavity, through its substance.

4. *Choanite* in flint; the usual appearance of these fossils.

5. Various kinds of SPICULA of fossil sponges $\times \times$.

ficus of Linnæus), which is described as having the

* See Foss. South D. p. 178.