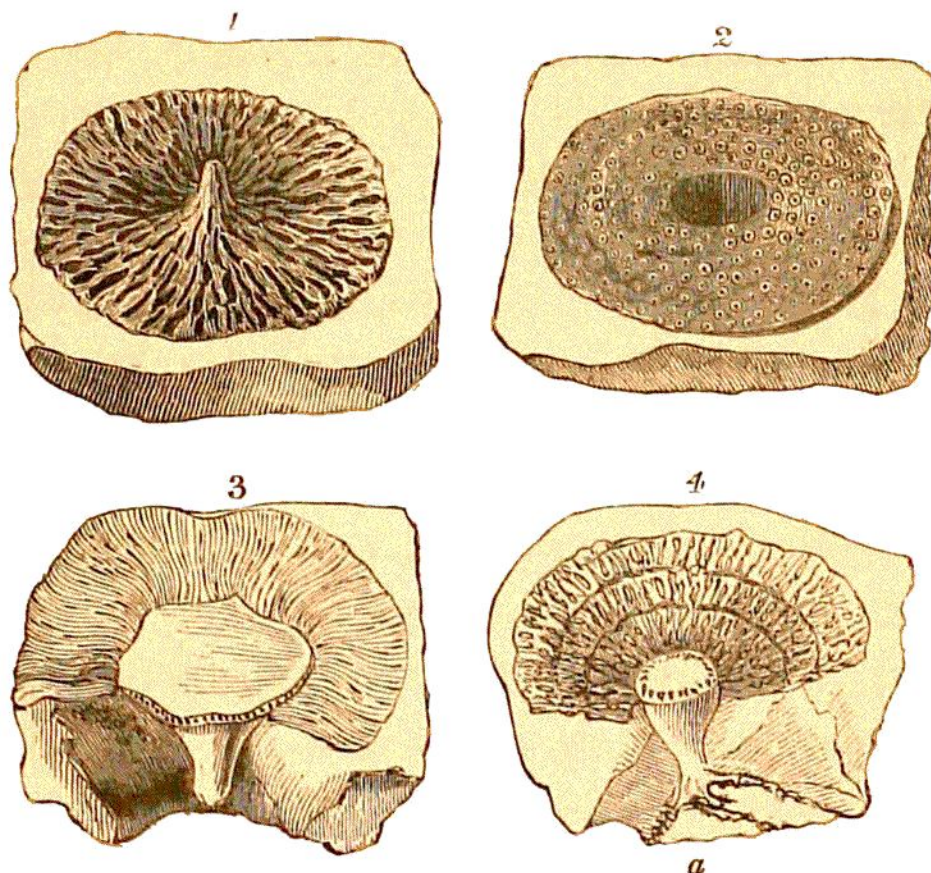


culite, a flint fills up the centre at *c* ; while above, the radiating reticulated structure is spread out on the chalk, *a* ; and the base, with its radicles, is shown at *b*.



LIGN. 61. VENTRICULITES RADIATUS. (G. A. M.)

*Chalk, near Lewes.  $\frac{1}{6}$  nat.*

- Fig. 1.—A perfect specimen in chalk, inverted, and showing the external reticulated surface.
- 2.—Specimen expanded, displaying the inner surface, covered with the openings of the polypiferous cells.
- 3.—A VENTRICULITE in chalk; the lower part enclosed in flint.
- 4.—Portion of a VENTRICULITE; the stem, towards the base, enveloped in flint, and three radicle processes spreading from it into the surrounding chalk at *a*.

These specimens demonstrate that all the flints referred to, have been moulded in the cavities of