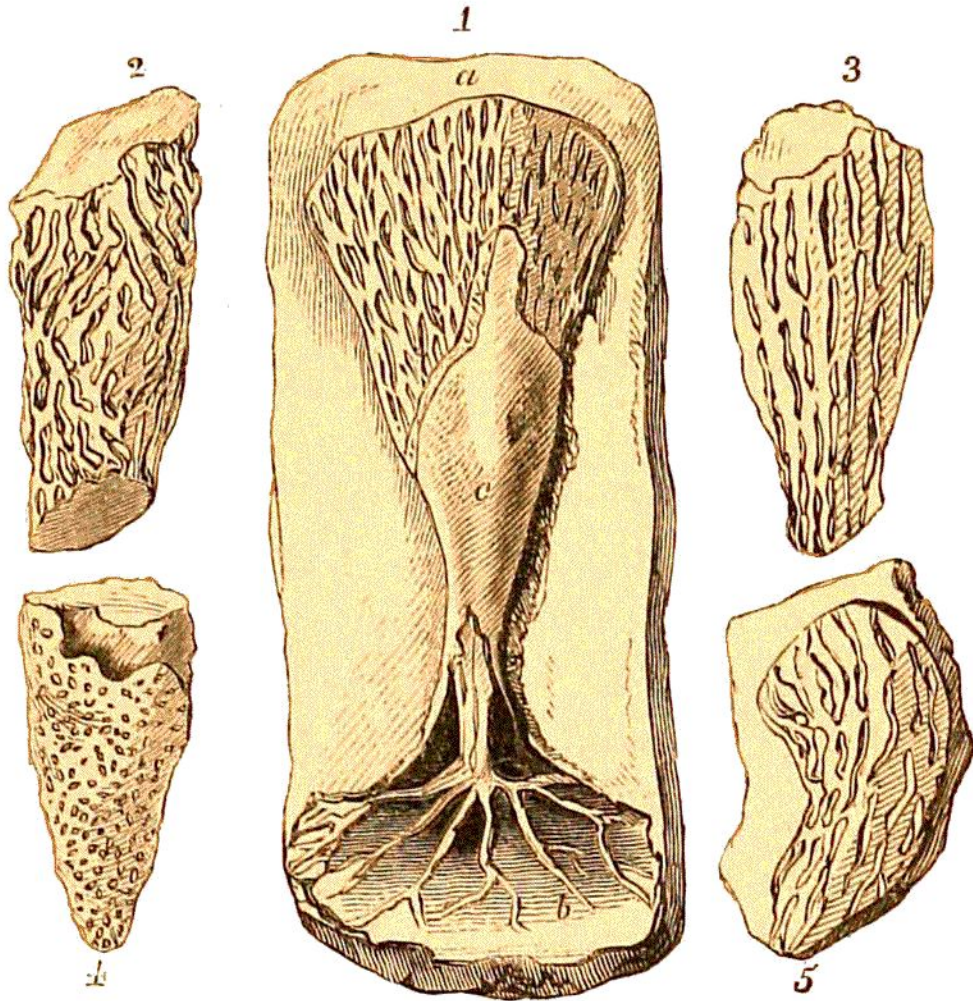


tricolite can be extracted, it is a solid cone, studded with minute papillæ, which are the casts of the orifices of the polype-cells, as in *Lign.* 62, fig. 4.*



LIGN. 62. VENTRICULITES, from the Chalk, near Lewes.

Fig. 1.—A specimen, in which the middle is enclosed in a flint *c*; the radiated structure of the Ventriculite is seen at *a*, expanded on the chalk; and the radicles, or processes of attachment, emerging from the flint below at *b*. The figures are one-fourth the size of the originals.

2, 3, 5.—Chalk specimens, showing the radiated external surface of stems of Ventriculites.

4.—A siliceous cast of the cavity of a Ventriculite covered with papillæ, moulded in the orifices of the polype-cells.

* *Org. Rem.* Vol. II. Pl. X. fig. 12, represents a specimen of this kind. The figure of a split pebble immediately beneath