

or compound, internal structure transversely chambered or lamellated; cells polygonal, radiated, depressed in the centre, hollow towards the margin.

The corals of this genus are so abundant in the Silurian rocks, that the seas of that epoch must

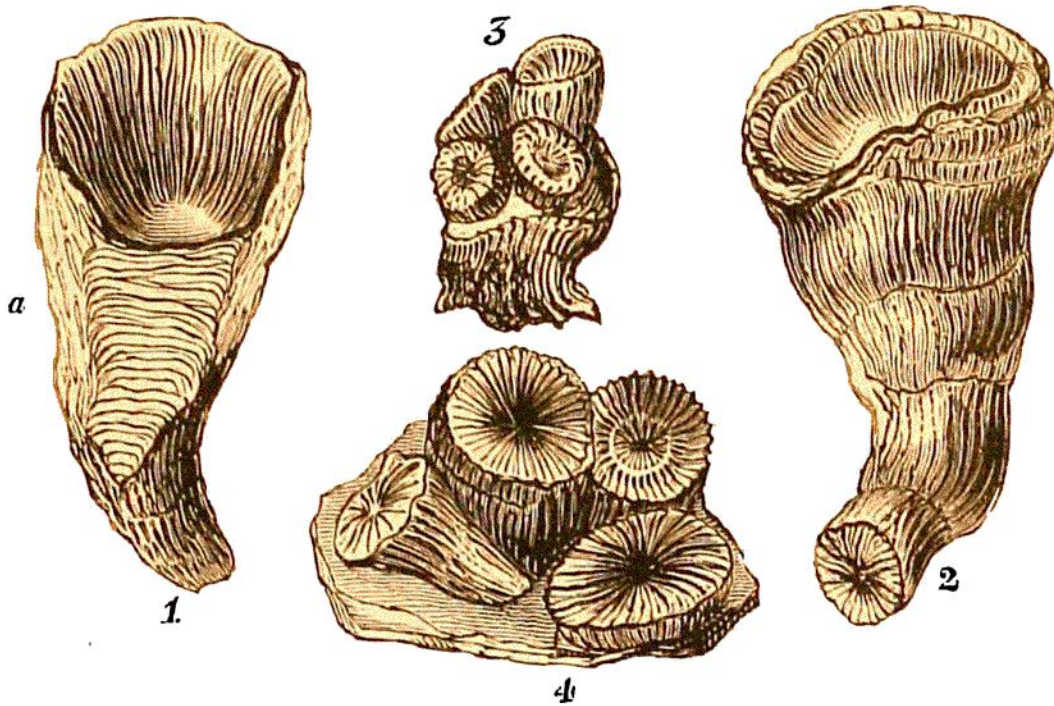


FIG. 67. CORALS FROM THE DUDLEY LIMESTONE.

(*Murch. Sil. Syst.*)

Fig. 1.—*CYATHOPHYLLUM TURBINATUM*: an oblique longitudinal section, showing at *a* the transverse lamellæ, or cells, of the internal structure.

2.—The same species.

3.—*CYATHOPHYLLUM DIANTHUS*: a specimen, with four young germs arising from the disc below.

4.—The same species, with four adult cells.

have teemed with these forms of zoophytal organization. The simple turbinated species are sometimes several inches long, and being somewhat curved, have obtained the popular name of "*petrified ramshorns.*"