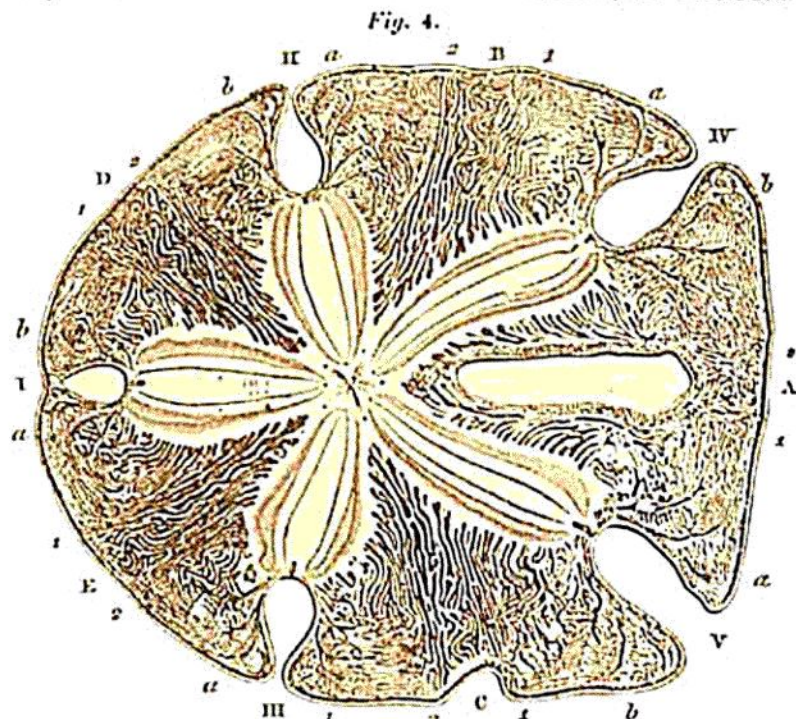
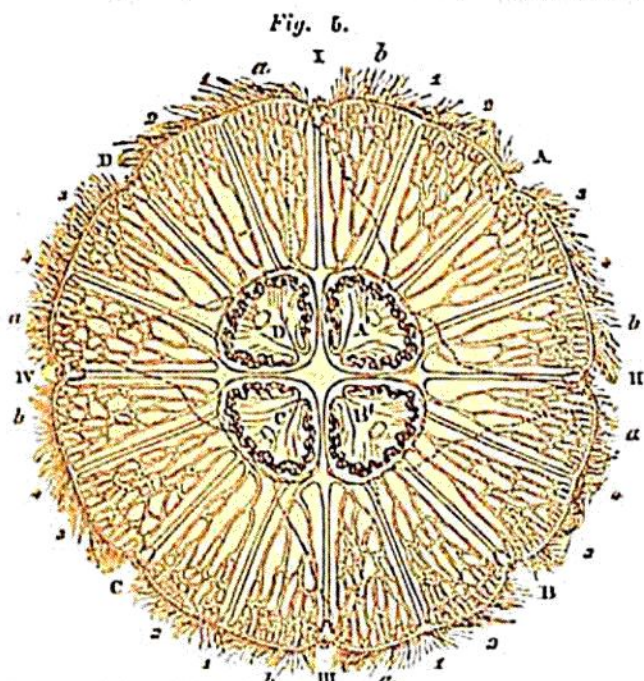


This being once understood, there can be no difficulty in homologizing the systems of radiating tubes of the *Aculephs* with those of the *Echinoderms*, as represented from the abactinal surface in *Encope Michelini*, *Fig. 4*. Upon removing the outer layer of the solid envelope of this *Sea-urchin*, there appear, in the interambulacral zones, five systems of tubes (A, B, C, D, and E), radiating towards the periphery, and there anastomosing with a circular marginal tube, no mention of which has thus far been made by any anatomist. These tubes are as numerous and as complicated, and anastomose as freely with one another, as the radiating tubes of any *Aculeph*; they occupy, as in the *Aculephs*, the same structural zone as the sexual organs, and are closely connected with them, as I shall show on another



*ENCOPE MICHELINI, Ac.* A, B, C, D, E, the interambulacral zones. — I, II, III, IV, V, the ambulacral zones. — *a, b* and *1, 2*, the respective halves of these systems.

occasion. With these alternate the five ambulacral zones (I, II, III, IV, and V), the tubes of which anastomose, near the periphery, with those of the interambulacral zones, as may be seen on every point of the circumference, where the tubes *a* and *b* of their respective ambulacra I, II, III, IV, and V, unite with the tubes *1* and *2* of their respective interambulacra A, B, C, D, and E. And these two sets of tubes correspond equally to the two sets already described in *Aurelia flavidula*; the ambulacral tubes I *a b*, II *b a*, III *a b*, and IV *b a* of



*AURELIA FLAVIDULA, Pér. & L.S.* I, II, III, IV, the ambulacral zones. — A, B, C, D, the interambulacral zones. — *a, b* and *1, 2, 3, 4*, the respective halves of these systems.

and V *b a* of *Encope Michelini*, *Fig. 4*, and the interambulacral tubes A *1 2 3 4*, B *1 2 3 4*, C *1 2 3 4*, and D *1 2 3 4* of *Fig. 5*, corresponding to the interambulacral tubes A *1 2*, B *1 2*, C *1 2*, D *1 2*, and E *1 2* of *Fig. 4*; the only differ-