

Fig. 697

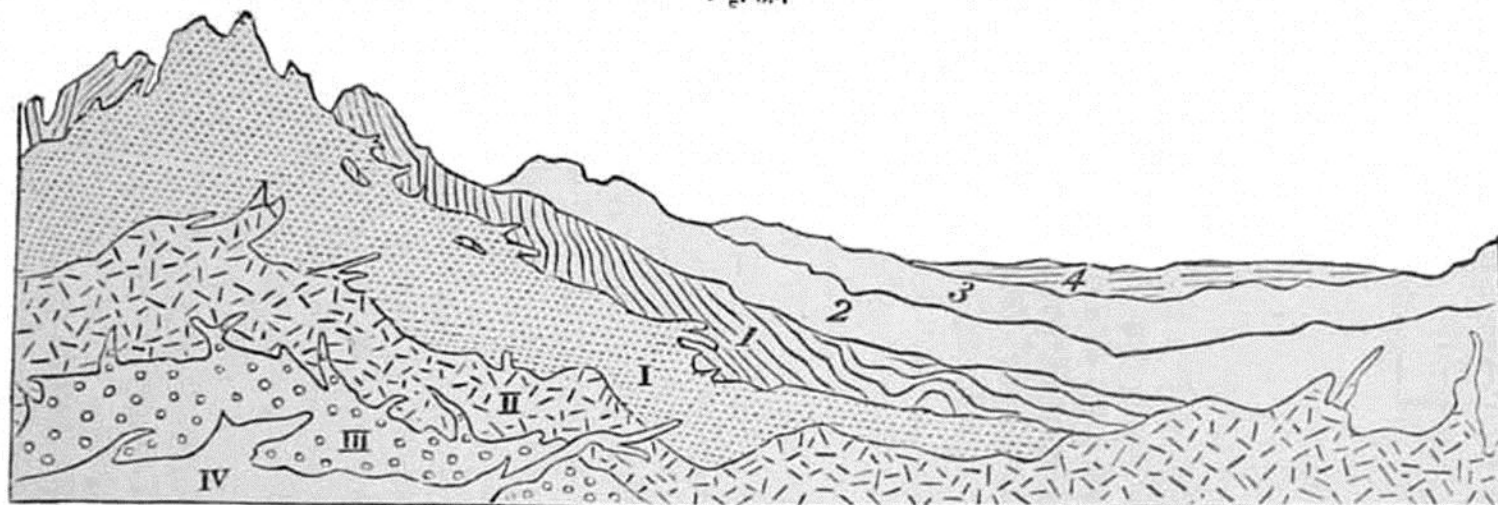


Diagram showing the relative position which the plutonic and sedimentary formations of different ages may occupy.

- | | |
|-------------------------|----------------------------------|
| I. Primary plutonic. | 4. Recent strata. |
| II. Secondary plutonic. | 3. Tertiary strata. |
| III. Tertiary plutonic. | 2. Secondary strata. |
| IV. Recent plutonic. | 1. Primary fossiliferous strata. |

The metamorphic rocks are not indicated in this diagram; but the student will infer, from what has been said in Chapter XXXII., that some portions of the stratified formations Nos. 1 and 2 invaded by granite will have become metamorphic.