

most strata of the earth's surface, and probably the very last large animal which became extinct before the creation of man.\*

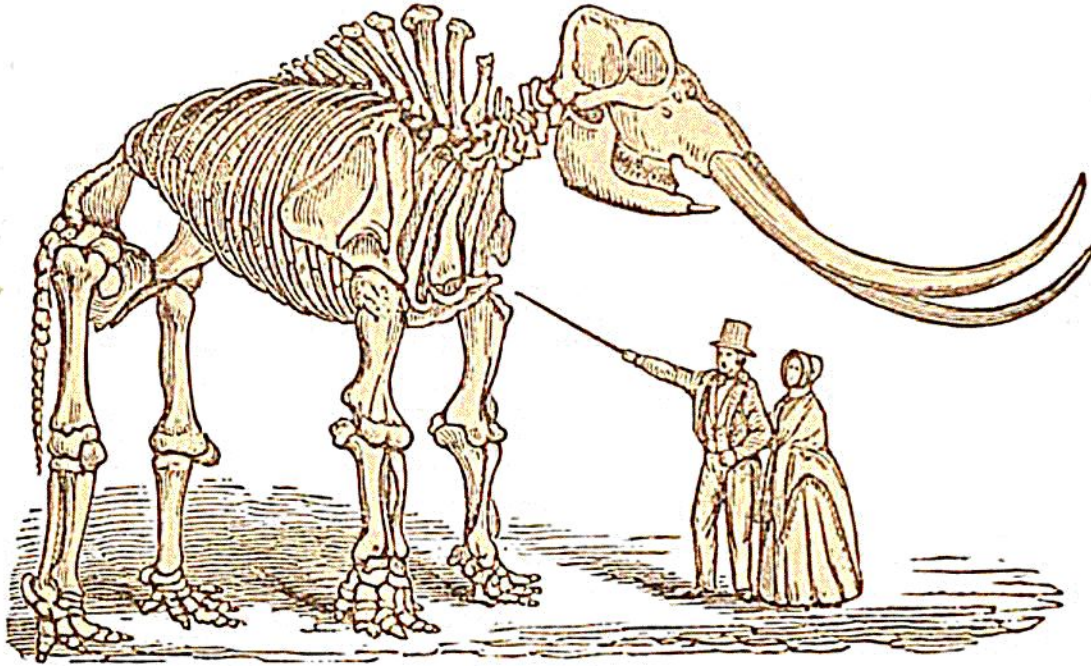


Fig. 170.

499. It is necessary, therefore, to distinguish two periods in the history of the animals now living; one in which the marine animals were created, and a second, during which the land and fresh-water animals made their appearance, and at their head MAN.†

#### CONCLUSIONS.

500. From the above sketch it is evident that there is a manifest progress in the succession of beings on the surface

---

\* The above diagram is a likeness of the splendid specimen disinterred at Newburg, N. Y., now in the possession of Dr. J. C. Warren, in Boston; the most complete skeleton which has ever been discovered. It stands nearly twelve feet in height, the tusks are fourteen feet in length, and nearly every bone is present, in a state of preservation truly wonderful.

† The former of these phases is indicated in the frontispiece, by a narrow circle, inserted between the upper stage of the Tertiary formation and the *Reign of Man* properly so called.