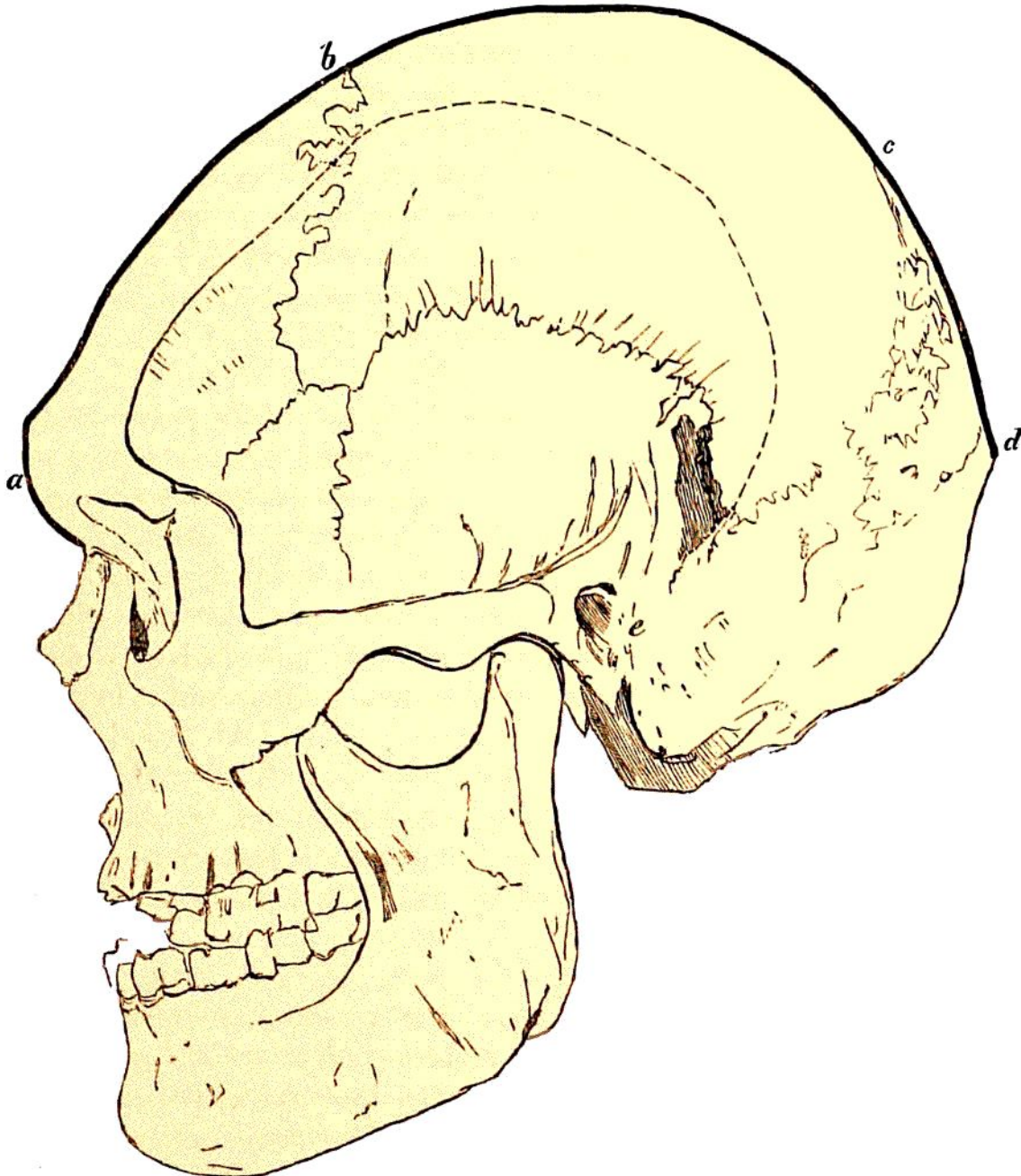


'To prevent the possibility of reasoning in a vicious circle, however, I thought it would be well to endeavour to ascertain what amount of cranial variation is to be found in a pure race at the present

Fig. 5



Skull associated with ground flint implements, from a tumulus at Borreby in Denmark, after a camera lucida drawing by Mr. G. Busk, F.R.S. The thick dark line indicates so much of the skull as corresponds with the fragment from the Neanderthal.

- |                              |   |
|------------------------------|---|
| <i>a</i> Superciliary ridge, | <i>c</i> The apex of the lambdoidal suture. |
| <i>b</i> Coronal suture.     | <i>d</i> The occipital protuberance.        |
|                              | <i>e</i> The auditory foramen.              |