

groups. The common feature of the Himalaya and of the Tibetan mountains is this methodless combination, which seems the result of the most fantastic chance.

An Asiatic mountain of all-absorbing interest is Mount Ararat, situated in Armenia, between the Black and the Caspian Seas. It is supposed that the elevation of this volcanic mass provoked the great geological catastrophe known as the *Asiatic Deluge*.

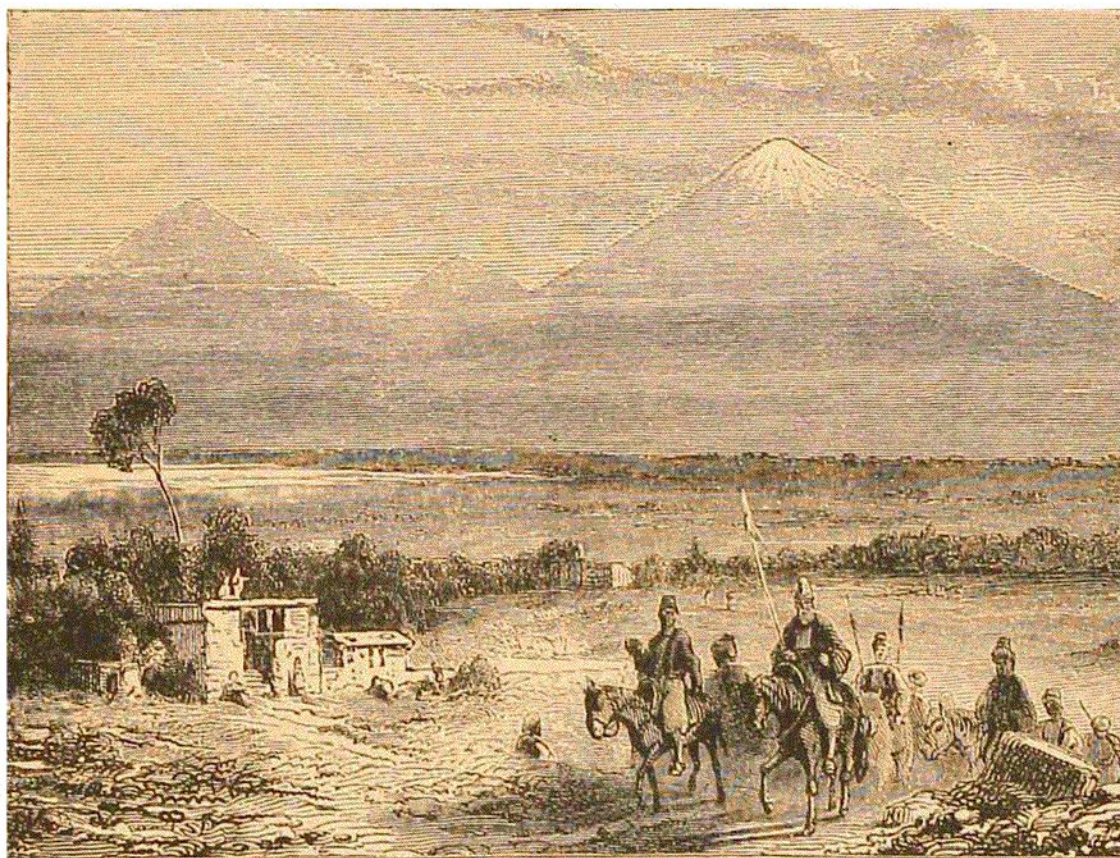


FIG. 67.—MOUNT ARARAT.

Mount Ararat was long considered inaccessible. In 1700, the eminent botanist Tournefort was compelled to abandon an attempted ascent, after having endured much useless fatigue. More recently, the Pasha of Bajazed despatched an expedition to escalate the sacred peak. These men constructed tents along their route, wherein they deposited supplies of provisions; but the cold forced them to retrace their steps without accomplishing the object of their mission. Finally, in 1829, the German traveller, Professor Parrot, succeeded in reaching the snow-shrouded summit, 17,323 feet above the sea. In 1834,