

Lake Rofner, at the foot of the glacier of Vernagt; Lake Combal,* in the Allée-Blanche; and Lake Tacul, in the Mer de Glace.

As an interesting example of lakes formed by glacial waters, we subjoin an illustration of the miniature basin which sleeps in the shadow of the Hospice of Mont St. Bernard, and in a terrible solitude, animated and vivified by charity and devotion.

[Strictly speaking, there is no mountain actually bearing the name of St. Bernard; which, as in the case of St. Gothard, is really given to the Pass.

The Hospice, a massive stone building on the very summit of the Pass, is 8200 feet above the sea-level. It is open to the fierce storms of the north-east and south-

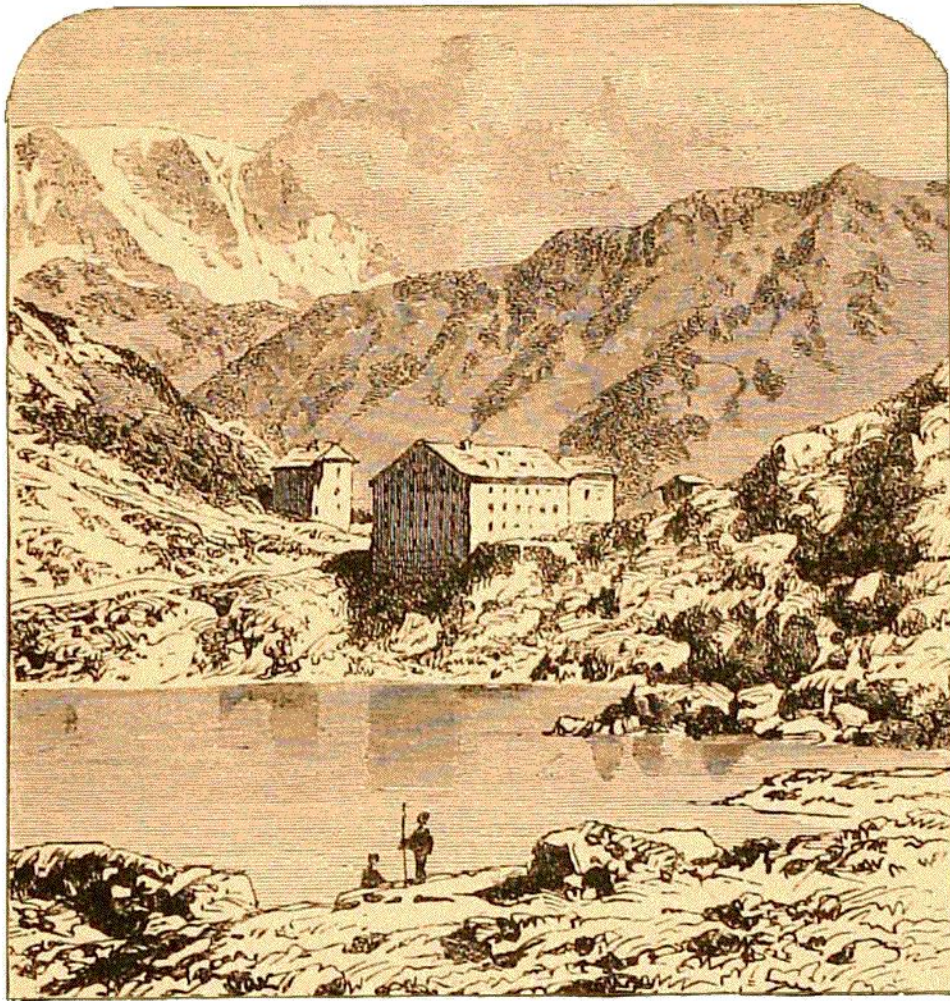


FIG. 112.—LAKE OF MONT ST. BERNARD. (From a Photograph by Ferrier.)

west; but on the north-west is protected by the Mont Chenellettaz, and to the south by the Mont Mort. Its establishment consists of twelve brethren of the Augustine order, and several assistant lay brethren, named *marroniers*, who devote their lives to the relief of the travellers journeying through the Alpine wastes of ice and snow. As many as 19,000 cross the St. Bernard in the course of a year, and numerous lives would be lost but for the opportune aid afforded by these heroic messengers of charity.

* [The Allée-Blanche is a vast glacier on the Italian side of Mont Blanc. From the Combal lake issues one of the sources of the river Dovia Baltia.]