

The plate opposite (PLATE X.) is a representation of an ideal aquarium, in which some of the more prominent species, which inhabited the seas during the period of the Carboniferous Limestone, are represented. On the right is a tribe of corals, with reflections of dazzling white: the species represented are, nearest the edge, the *Lasmocyathus*, the *Chaetetes*, and the *Ptylopora*. The Mollusc which occupies the extremity of the elongated and conical tube in the shape of a sabre is an *Aploceras*. It seems to prepare the way for

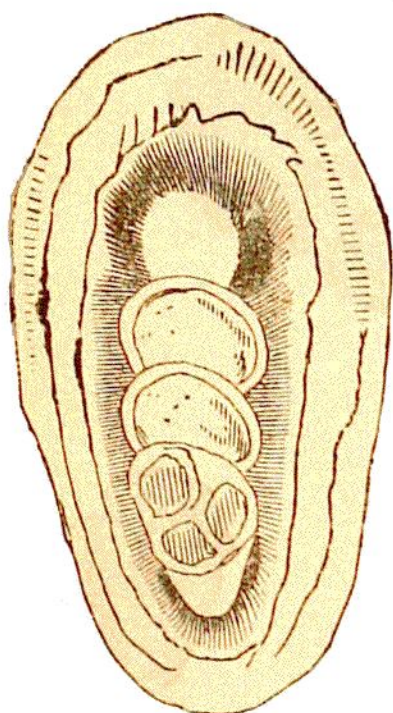


Fig. 60.—Foraminifera of the Mountain Limestone, forming the centre of an oolitic grain. Power 120.



Fig. 61.—Foraminifera of the Chalk, obtained by brushing it in water. Power 120.

the Ammonite; for if this elongated shell were coiled round itself it would resemble the Ammonite and Nautilus. In the centre of the foreground we have *Bellerophon hiulcus* (Fig. 56), the *Nautilus Koninckii*, and a *Producta*, with the numerous spines which surround the shell. (See Fig. 62.)

On the left are other corals: the *Cyathophyllum* with straight cylindrical stems; some Encrinites (*Cyathocrinus* and *Platycrinus*) wound round the trunk of a tree, or with their flexible stem floating in the water. Some Fishes, *Amblypterus*, move about amongst these creatures, the greater number of which are immovably attached, like plants, to the rock on which they grow.

In addition, this engraving shows us a series of islets, rising out of