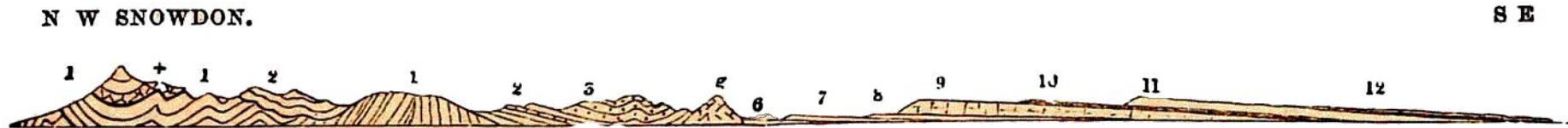


FIG. 57

*Diagrammatic Section from the Menai Straits across Wales, the Malvern Hills, and the Escarpments of the Oolitic Rocks and the Chalk. See Map, line 6.*



Nos. 1 to 3, 5, and *g* represent the disturbed Cambrian, Lower and Upper Silurian, and Old Red Sandstone mountainous country of North Wales, the adjacent countries on the east, and the Malvern Hills *g*.

6 to 8 the plains and slightly undulating grounds of the New Red Sandstone, Red Marl, and Lias.

9 and 10 the great Oolitic escarpment of the Cotswold Hills, forming the first tableland.

11 the great escarpment of the Chalk, forming a second tableland, above which lie the Eocene strata, 12.

The Upper Oolites, close below the Chalk escarpment 11, are in places of less height relatively to the sea than the edge of the Oolitic escarpment at 9.