

Devonian, or a related species, is common in some portions of the Pottsville conglomerate in Kentucky and elsewhere.

1. **Vascular Cryptogams.** — *Lycopods*. The *Lepidodendron* trees had the exterior embossed with oblong scars, as in Figs. 1033, 1034, and 1036.

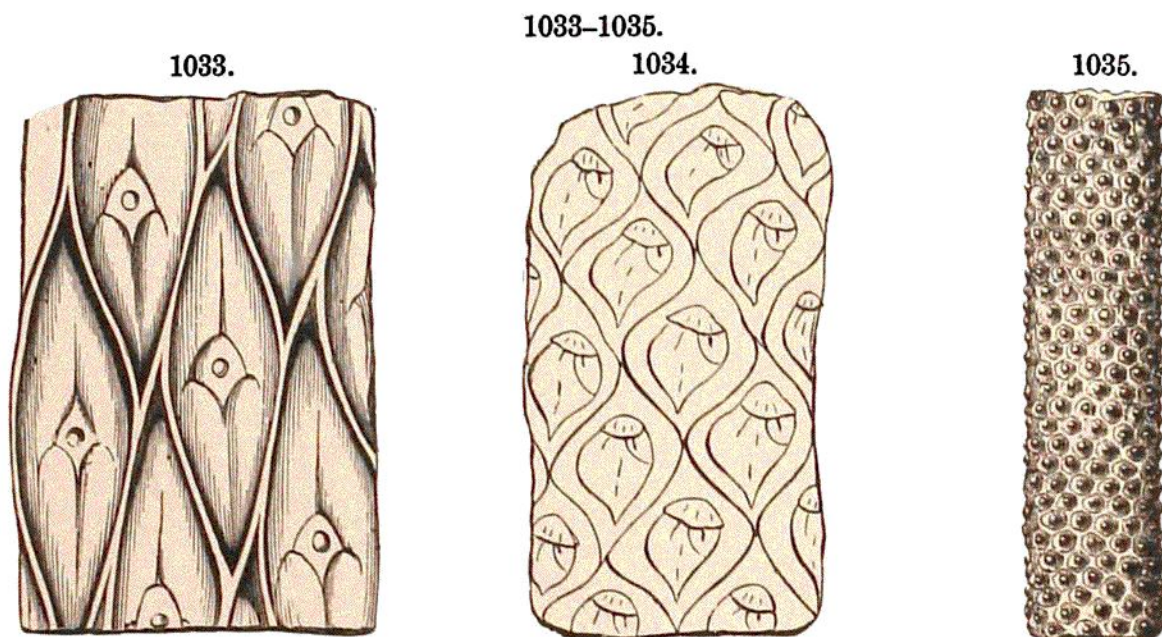


Fig. 1033, *Lepidodendron aculeatum*; 1034, *Lepidodendron clypeatum*; 1035, *Halonía pulchella*. Fig. 1033, Fairchild; 1034, 1035, Lesquereux.

Leaves like those of the Spruce or Pine occasionally occur on the fossil stems (Fig. 1040); and in some foreign specimens of *L. Sternbergii* Brgt., from Austrian coal-beds, they are over a foot long, and as closely crowded on the branches as in any modern pine. The *Lycopodium dendroideum* of modern forests, if magnified largely, would give a good idea of the aspect of the

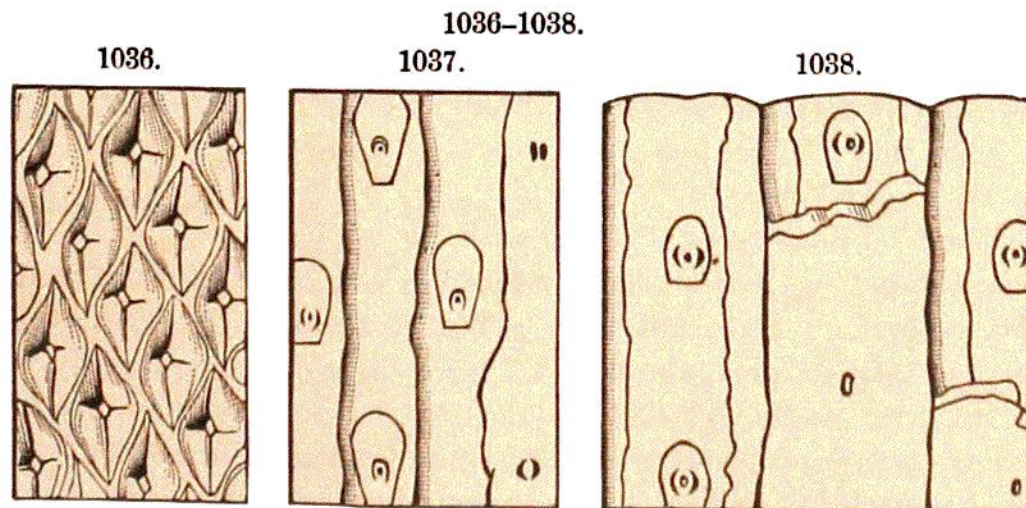


Fig. 1036, *Lepidodendron Veltheimianum*; 1037, *Sigillaria Sillmani*; 1038, *S. Pittstonana*. Lesquereux.

trees. The cones of *Lepidodendrids* were long, and much like those of a living *Lycopod*, and are referred to under the name *Lepidostrobus*, and the leaves of the cone under that of *Lepidophyllum*. The stems, called *Lycopo-*