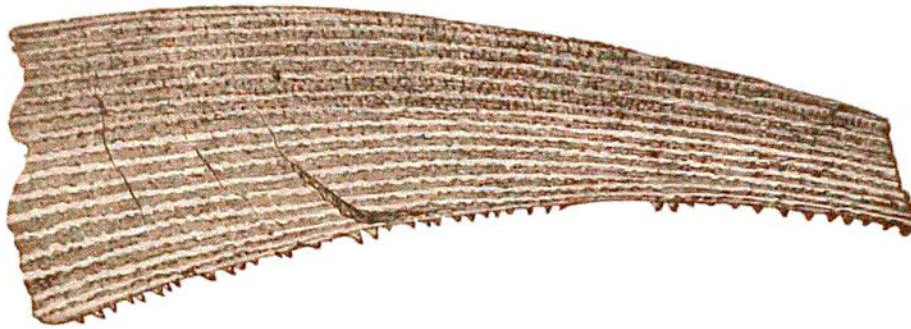


The Amphibians have nearly the same range of characters as the American. There are *Loxomma Allmanni* Hux., from Edinburgh, the skull 10 inches wide and 14 inches long, and the teeth with cutting edges; *Anthracosaurus*

1142.



1143.

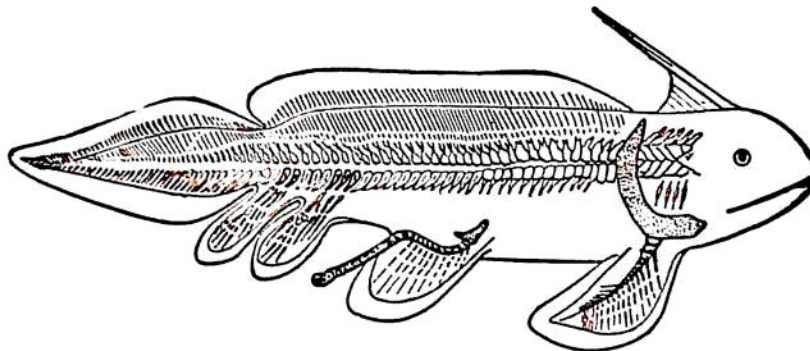


Fig. 1142, part of a spine of *Ctenacanthus major* Ag.; 1143, restoration of *Pleuracanthus Gaudryi* ($\times \frac{1}{2}$), Brongniart.

Russelli Hux., Lanarkshire; *Parabatrachus Colei* Owen, British Coal-measures; *Anthracerpeton crassosteum* Owen, Glamorganshire; *Archegosaurus Decheni* Goldfuss, Saarbrück, $3\frac{1}{2}$ feet long; *A. minor* Meyer, Saarbrück; besides various snake-like and other species.

1. **Brachiopods.** — Some of the characteristic species, besides those figured, are: *Productus scabriculus* Sow.; *Spirifer speciosus* Br., *S. cuspidatus* Sow., *S. disjunctus* Sow.; *Chonetes Dalmanianus* Kon.; *Orthis Michelini* Morr.

2. **Limulids.** — Fig. 1136, *Prestwichia rotundata* Woodw., Coalbrook Dale; *P. anthrax* Woodw., Coalbrook Dale; *Belinurus trilobitoides* Woodw., Ireland, Coalbrook Dale; *B. Reginae* Baily, Ireland; *B. arcuatus* Baily, Ireland.

3. **Crustaceans.** — Fig. 1135, *Gamponyx fimbriatus* Jordan, a *Schizopod*; 1134, *Anthracopalæmon Salteri*, Lanarkshire, *A. dubius* S., Coalbrook Dale, *A. Grossarti* S. Lanarkshire; the broad flattened thorax indicates a nearer relation to *Æglea* and *Galathea* than to *Palæmon*. *Pygocephalus Couperi* Hux., a *Schizopod*, Manchester, England.

4. **Myriapods.** — *Euphoberia Brownii* Woodw., Glasgow, *E. anthrax* Woodw., Coalbrook Dale, *Xylobius sigillariae* Dn., Glasgow and Huddersfield.

5. **Arachnids.** — Fig. 1137, *Cyclophthalmus senior* Corda, Chomle, Bohemia; *Eophrynus Prestwichii* Buckl., Dudley; *Geralinura Bohemica* Kusta; *Architarbus subovalis* Woodw., Lancashire, very near the Illinois species (page 691); *Protolycosa anthracophila* R., Silesia; *Anthracomartus Völkelianus* Kranch, Silesia.