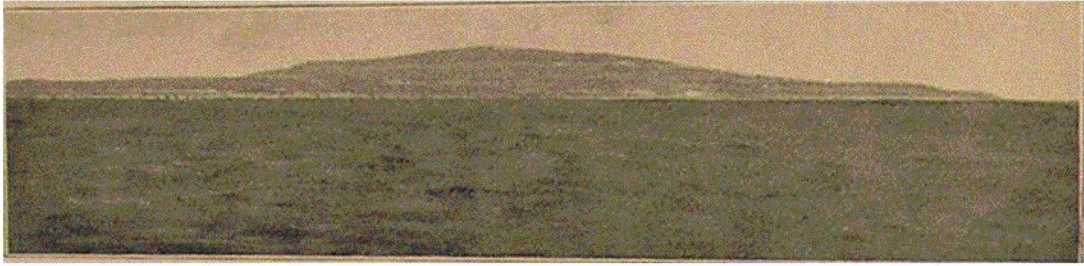


patches and even large drifts of snow here and there, some of them lying close down by the shore. Next morning I sighted the southernmost of the Kamenni Islands. We took a tack in under it to see if there were



OSTROVA KAMENNI (ROCKY ISLAND), OFF THE COAST  
OF SIBERIA

animals of any kind, but could catch sight of none. The island rose evenly from the sea at all points, with steep shores. They consisted for the most part of rock, which was partly solid, partly broken up by the action of the weather into heaps of stones. It appeared to be a stratified rock, with strongly marked oblique strata. The island was also covered with quantities of gravel, sometimes mixed with larger stones; the whole of the northern point seemed to be a sand heap, with steep sand-banks towards the shore. The most noticeable feature of the island was its marked shore-lines. Near the top there was a specially pronounced one, which was like a sharp ledge on the west and north sides, and stretched across the island like a dark band. Nearer the beach were several other distinct ones. In form they all