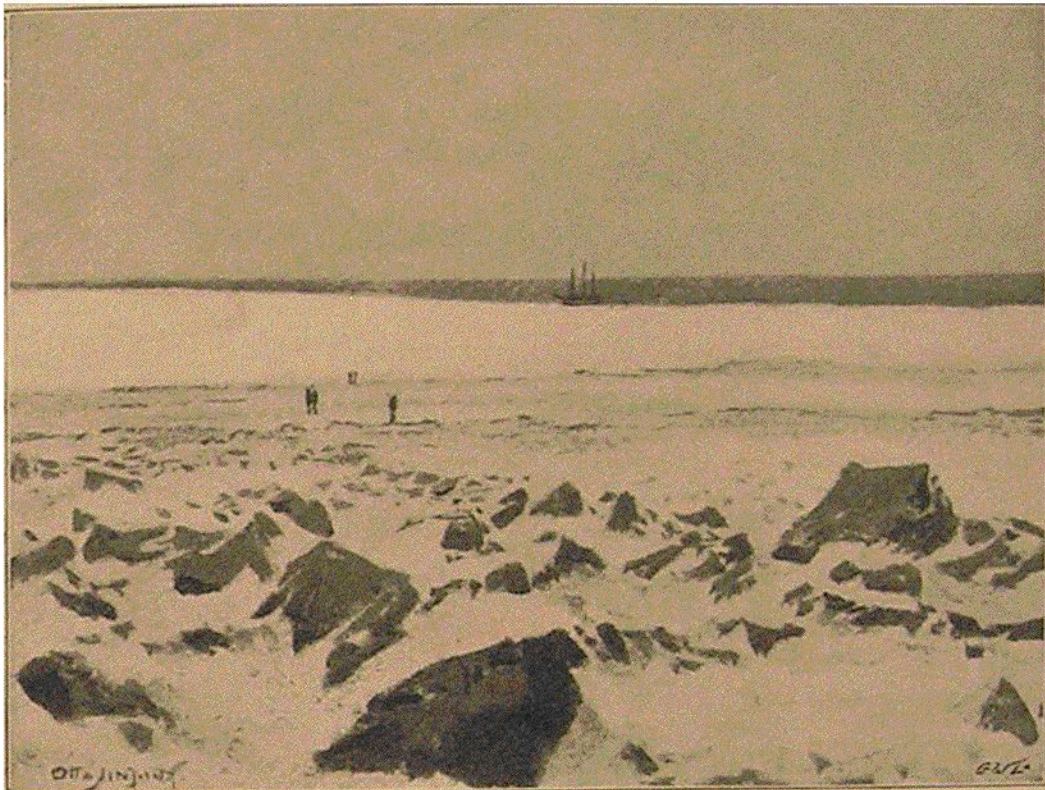


we passed a couple of small islands, lying a short way from the coast. We had to stop before noon at the northwestern corner of Chelyuskin, on account of the drift-ice which seemed to reach right into the land before us. To judge by the dark air, there was open water again on the other side of an island which lay ahead. We landed and made sure that some straits or fjords



ON LAND EAST OF CAPE CHELYUSKIN (SEPTEMBER 10, 1893)

(By Otto Sinding, from a Photograph)

on the inside of this island, to the south, were quite closed with firm ice; and in the evening the *Fram* forced her way through the drift-ice on the outside of it. We steamed and sailed southward along the coast