

is *Pseudocrinites quadrifasciatus*. More than 30 species of annelids have been found. The crustaceans include numerous trilobites, one of the most abundant being the long-lived *Calymene Blumenbachii*, which ranges from the Llandeilo flags (possibly from a still lower horizon) up to near the top of the Upper Silurian formations. It occurs abundantly at Dudley, where it received the name of the "Dudley Locust." Other common forms are *Encrinurus punctatus*, *E. vario-*

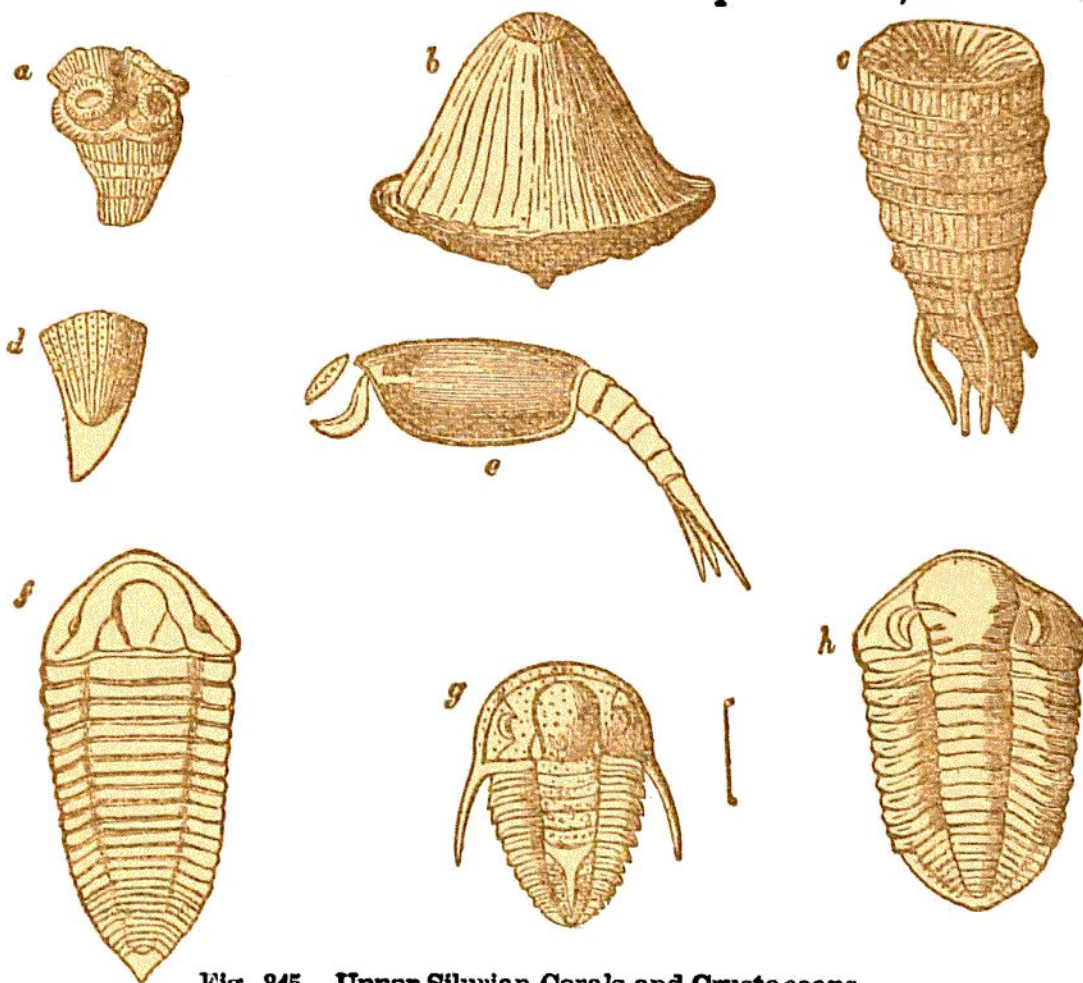


Fig. 845.—Upper Silurian Corals and Crustaceans.

*a*, *Acervularia ananas*, Linn.; *b*, *Ptychophyllum patellatum*, Schloth ( $\frac{1}{2}$ ); *c*, *Omphyma subturbinatum*, Linn. ( $\frac{1}{2}$ ); *d*, *Petraia bina*, Lons.; *e*, *Ceratiocaris papillo*, Salt. ( $\frac{1}{4}$ ); *f*, *Homalonotus delphinocephalus*, Green ( $\frac{1}{4}$ ); *g*, *Cyphaspis megalops*, McCoy; *h*, *Phacops Downingiae*, Murch.

*laris*, *Phacops caudatus*, *P. Downingiae*, *P. Stokesii*, *Illænus* (*Bumastus*) *barriensis*, *Homalonotus delphinocephalus*, and *Cheirurus bimucronatus*. One of the most remarkable features in the crustacean fauna is the first appearance of the merostomata, which are represented by *Eurypterus punctatus*, *Hemiaspis horridus*, and *Pterygotus problematicus*. The brachiopods continue to be abundant, about 20 genera and 100 species having up to this time been enumerated. Among typical species may be noted *Atrypa reticularis*,