

ably small head. Its legs and feet were massive, with solid bones, and made footprints each measuring about a square yard in area. Its length is estimated at 50 feet or more, and its weight, when alive, at more than 20 tons. In habit it was more or less amphibious, probably feeding on aquatic

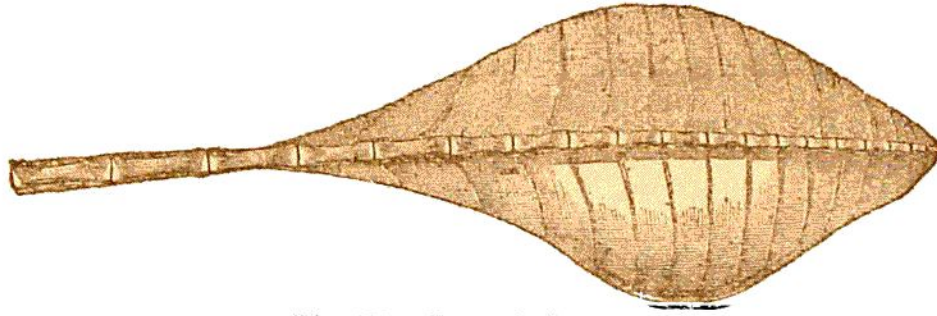


Fig. 400.—Jurassic Pterosaur.
Rhamphorhynchus Munsteri, Goldf. Caudal extremity (nat. size).

plants or other succulent vegetation. The small head and brain and slender neural cord indicate a stupid, slow-moving reptile.⁵² Stegosaurus had a remarkably small skull with short massive jaws, very short, powerful fore-limbs, with comparatively long and slender hind-limbs. But its most

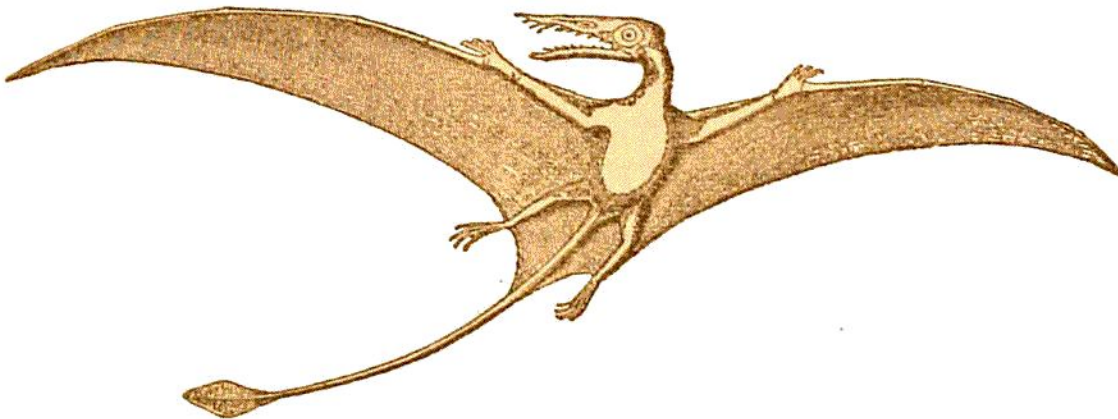


Fig. 401.—Jurassic Pterosaur.
Rhamphorhynchus Munsteri (?), restored by Marsh.

singular character was the possession of numerous dermal spines, some of great size and power, and many bony plates of various sizes and shapes, some of them more than 3 feet in diameter. Thus armed as well as protected, it must have

⁵² Marsh, Amer. Journ. Sci. xxvi. 1883, p. 81.