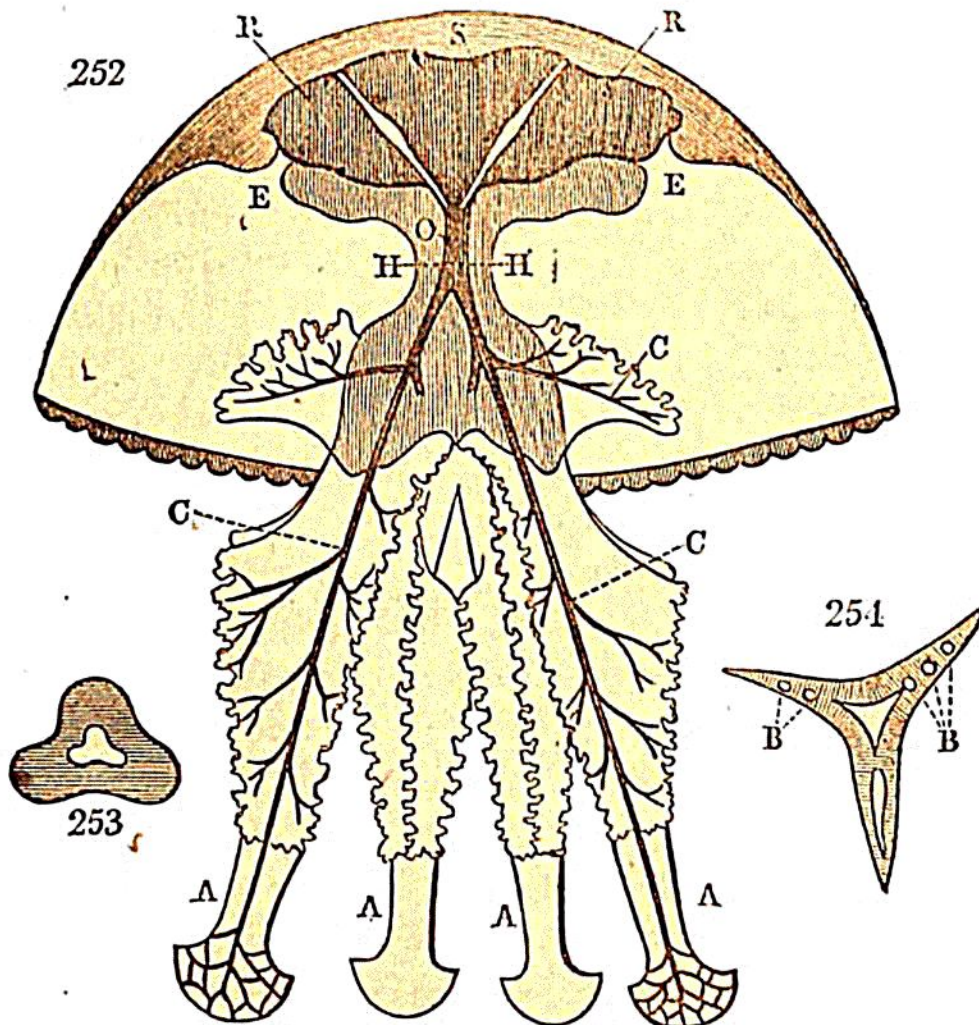


*Cuvieri*, after being thus injected, are represented in the annexed figures; the first of which (Fig. 249,) shows the under surface of that animal, after the pedicle has been removed by a horizontal section, at its origin from the hemispherical body, or *cupola*, as it may be termed, where it has a square prismatic form, so that its section presents the square surface, *q, q*. Fig. 252 is a vertical section of the same specimen; both figures being reduced to about one-half of the natural size. The dotted line, *h, h*, in the latter figure, shows the plane where the section of the pedicle was made in order to give the view of the base of the hemisphere presented in Fig. 249. On the other hand, the dotted line *v, v*, in Fig. 249, is that along which the vertical section of the same animal, represented in Fig. 252, was



made; four of the arms (*A, A, A, A*) descending from the pedicle being left attached to it. In these arms, or tentacula,