

that genus. But the most remarkable animals belonging to the Order, are the *Phyllosomes* (*fig. 73*) of Dr. Leach, which in some respects are analogues of the *Spectres*,* not having the raptorious fore leg of the *Squillæ*, but their thorax, which consists of two segments, the first very much dilated, approaches nearer to that of *Mantis strumaria*.† It has been taken in several tropical seas, and when living, it is said to be as transparent as crystal, except its eyes, which are sky-blue.

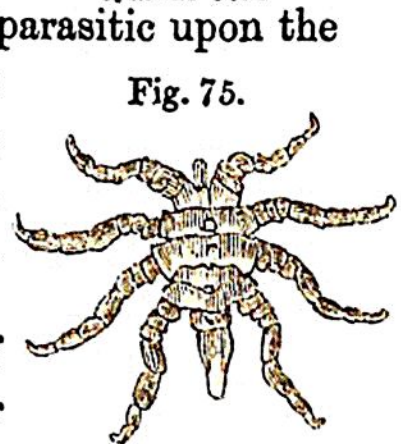
The subsequent orders of the Crustaceans, called by the general name of *Malacostracans* are distinguished from the preceding by having sessile eyes, embedded in the substance of the head, and though they contain many singular creatures, we know little of their habits and history.

Many of the animals belonging to Latreille's *Læmodipods*, or throat-footed Crustaceans, which begin the sessile-eyed tribes, have very slender bodies, and their legs are separated by a considerable interval, like those of geometric larves or loopers amongst insects, whose motions they also imitate. One remarkable creature is included in this order, which is parasitic upon the whale (*fig. 74*), and by its hooked claws is enabled to maintain its station amidst the fluctuations of the waves. This animal, like the king-crab, has both compound and simple eyes.

Next to these succeed the Order of *Amphipods* (*fig. 75*), including a number of genera, consisting usually of minute animals; many of them, like the grasshoppers, and several other insects, are gifted by their Maker with the faculty of



Cyamus Ceti.



Pycnogonum balænarum.

* Phasma.

† Stoll. Spectr. t. xl. f. 42