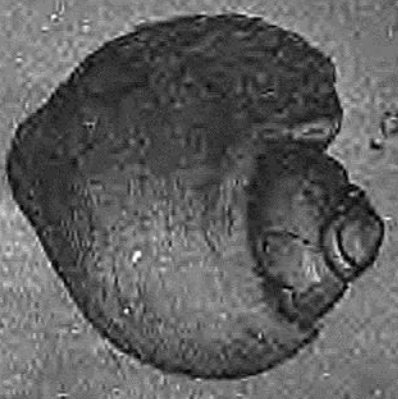


CONFRASER.



- 1. *Alveola*.
- 2. *Ammonites abietis* M.C. 12
- 3. *Medusa*.

- 4. *Dryopora costata* M.C. 65
- 5. *Fossils*.
- 6. *Cardium*.

- 7. *Dipax*.
- 8. *Alveola* *reticulata*, *Sonn.*, *Sp. 2. p. 67*.
- 9. *Alveola* *equivalens*, *Sonn.*

1

0

0 0