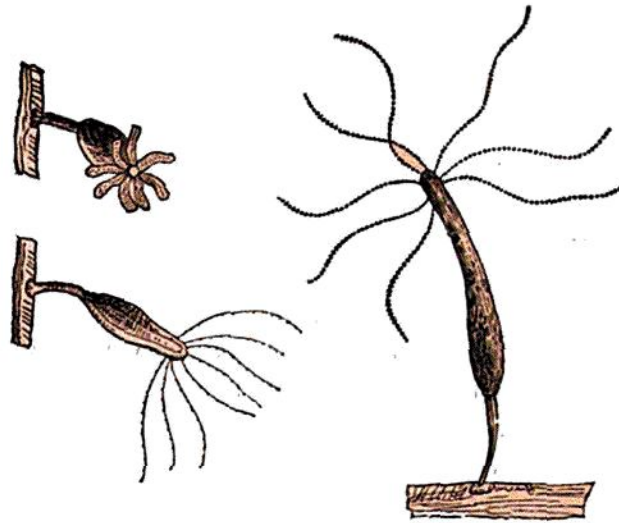


Fig. 11.



I. ZOOPHYTA HYDROIDA.

FAMILY I. HYDRAIDÆ.

I. HYDRA,* Linnæus.

CHARACTER.—*Polypes locomotive, single, naked, gelatinous, sub-cylindrical, but very contractile and mutable in form, the mouth encircled with a single series of granulous filiform tentacula.*

I. H. VIRIDIS, *grass-green; body cylindrical or insensibly narrowed downwards; tentacula 6—10, shorter than the body.*

WOODCUT, No. 4, page 37.

Polypes verds, *Trembley*, Mem. 22, pl. 1, fig. 1; pl. 3, fig. 1—10.—
Fresh-water Polypus, *Trembley*, in Phil. Trans. Abridg. viii. 623. *Folkes*,
in ibid. 676. pl. 17, and pl. 18, fig. 1—3.—*Hydra viridis*. *Lin.*
Faun. Suec. 367, No. 1283. *Lin. Syst.* 1320. *Mull. Verm.* I. ii. 19.
Zool. Dan. prod. 230, No. 2783. *Berk. Syn.* i. 221. *Ure's Rutherg.* 292.
Turt. Gmel. iv. 691. *Turt. Br. Faun.* 218. *Lam. Anim. s. Vert.* ii. 60.
Stew. Elem. ii. 452. pl. 12, fig. 4, 5. *Blumenbach's Man.* 275. pl. 1.
fig. 10. *Bosc, Vers* ii. 274. *Stark, Elem.* ii. 443. *Woodward* in *Mag.*
Nat. Hist. iii. 349, fig. 89. *Roget, Bridgew. Treat.* i. 162, fig. 59, and
176—8, fig. 73—76. *Adams on the Microscope*, 399, pl. 21, fig. 5.

* ὕδρα—properly “a water serpent,” but the name has been appropriated to the monster of Lake Lerna, fabled to have 50 or 100 heads, of which no sooner was one of them cut off, than two sprouted out in its place. From this property Linnæus was obviously led to apply the name to the animalcules in question.