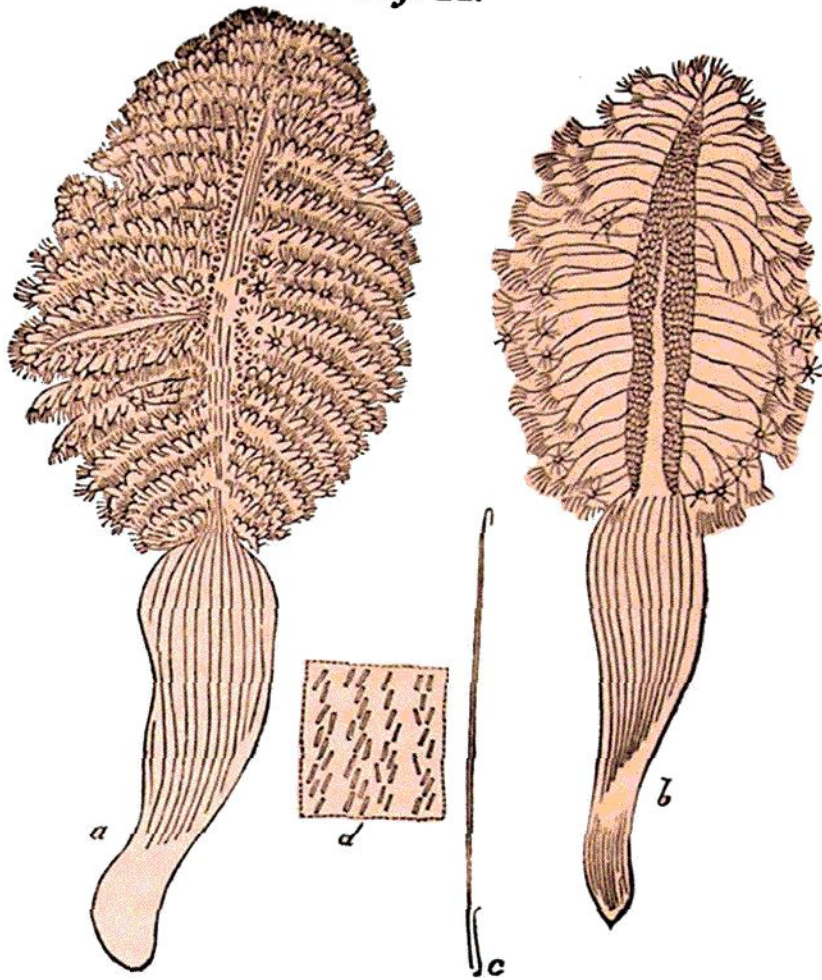


Fig. 22.



FAMILY IV. PENNATULIDÆ.

12. PENNATULA,* Linnæus.

CHARACTER. *Polype-mass free, plumous, the shaft subcylindrical, naked beneath, pennated above; pinnæ two-ranked, spreading, flattened, and polypiferous along the upper margin.*

1. *P. PHOSPHOREA*, purplish-red, the base of the smooth stalk pale; rachis roughened with close set papillæ and furrowed down the middle; pinnæ close; polype-cells uniserial, tubular, with spinous apertures. Sir R. Sibbald.

VIGNETTE, Fig. 22.

* Formed from *Penna*, a quill—which the species so remarkably resemble that we may say in the words of Lamarck—“ Il semble, en effet, que la nature, en formant ce corps animal composé, ait voulu copier la forme extérieure d'une plume d'oiseau.”—Anim. s. Vert. ii. 425.