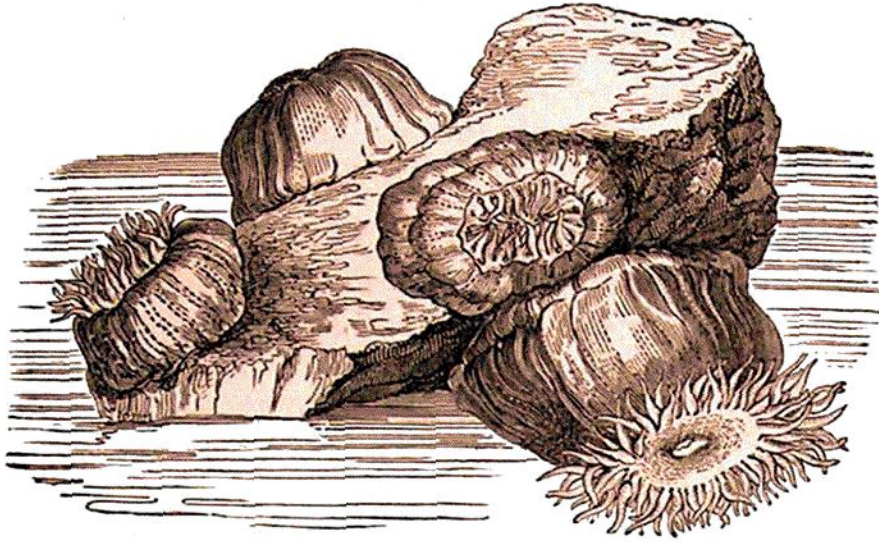


Fig. 31.



## FAMILY VIII. ACTINIIDÆ.

### 19. ACTINIA,\* Linnæus.

CHARACTER. *Body conoid or cylindrical, adhering by a broad base: the space between the mouth and the rim of the upper disk occupied by one or more uninterrupted series of conical undivided tubular tentacula which are entirely retractile.*

1. *A. MESEMBRYANTHEMUM*, *body conoid, smooth; tentacula numerous, multiserial; margin of the oral disk ornamented with a circle of azure-blue tubercles.*

Var. *α*. *Body and tentacula of a uniform liver-brown or olivaceous colour, rarely streaked with bluish or green lines.*

#### VIGNETTE, No. 31.

*Ortie de mer*, Reaumur in Mem. de l'Acad. Roy. des Scienc. 1710, pl. 10. fig. 22.—*Priapus equinus*, Lin. Syst. edit. 10. 656.—*Hydra disciflora*, tentaculis retractilibus, extimo disci margine tuberculato, Gartner in Phil. Trans. lii. 83, pl. 1. fig. 5.—*Actinia equina*, Lin. Syst. 1088. *Dicquemare* in Phil. Trans. lxiii. 364, pl. 16, fig. 1-7.† *Mull. Zool.*

\* From *ακτιν*, a ray.

† Dicquemare himself uses no specific names: they were applied to his figures by Dr Solander, who, it is to be presumed, was well acquainted with the Linnæan species.