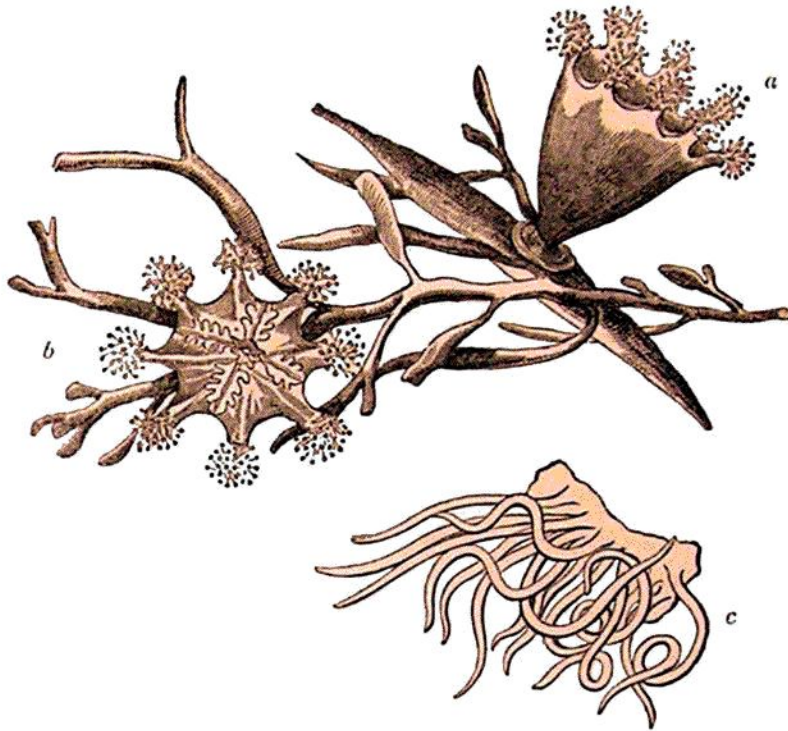


species. Otho Fabricius tells us—"Vescitur oniscis, præsertim *onisco abyssino*, quem semper fere solum in ventriculo ejus inveni; raro in majoribus squilla lobata occurrit. Hi miseri in aperturam corporis dilatata offendentes, statim tentaculis concludentibus capiuntur et ingurgitantur.—Sæpe in uno verme plures oniscos invenire contigit, interioribus corruptis, exterioribus adhuc integris."—*Otho Fabricius*.

3. *L. CAMPANULATA*, body sessile, campanulate; tufts of tentacula 8, equidistant, without intermediate marginal tubercles. Dr John Coldstream.*

Fig. 37.



Lucernaria campanulata, Lamouroux in Mem. du Mus. ii. 472, pl. 16, fig.

1—7.—*L. Convolvulus*, Johnston in Mag. Nat. Hist. viii. 59, fig. 3.

—*Lucernaire auricule*, Blainv. Actinolog. pl. 50, fig. 4.

Hab. On sea-weed near low-water mark. Torbay, Dr Coldstream. Berwick Bay, G. J.

About an inch in height; of a uniform liver-brown colour, smooth, adhering by a circular disk, above which there is a deep stricture or short peduncle: the disk even, strengthened by an interior cartila-

* A native of Leith, where he is now settled as a physician. Dr C. is an alumnus of the University of Edinburgh, and graduated M. D. in 1827; his Thesis being "de Indole Morborum periodica." He early distinguished himself by researches in Meteorology and Zoology, more particularly by his essays on the chromophorous globules of the Cephalopoda, and on *Limnoria terebrans*.