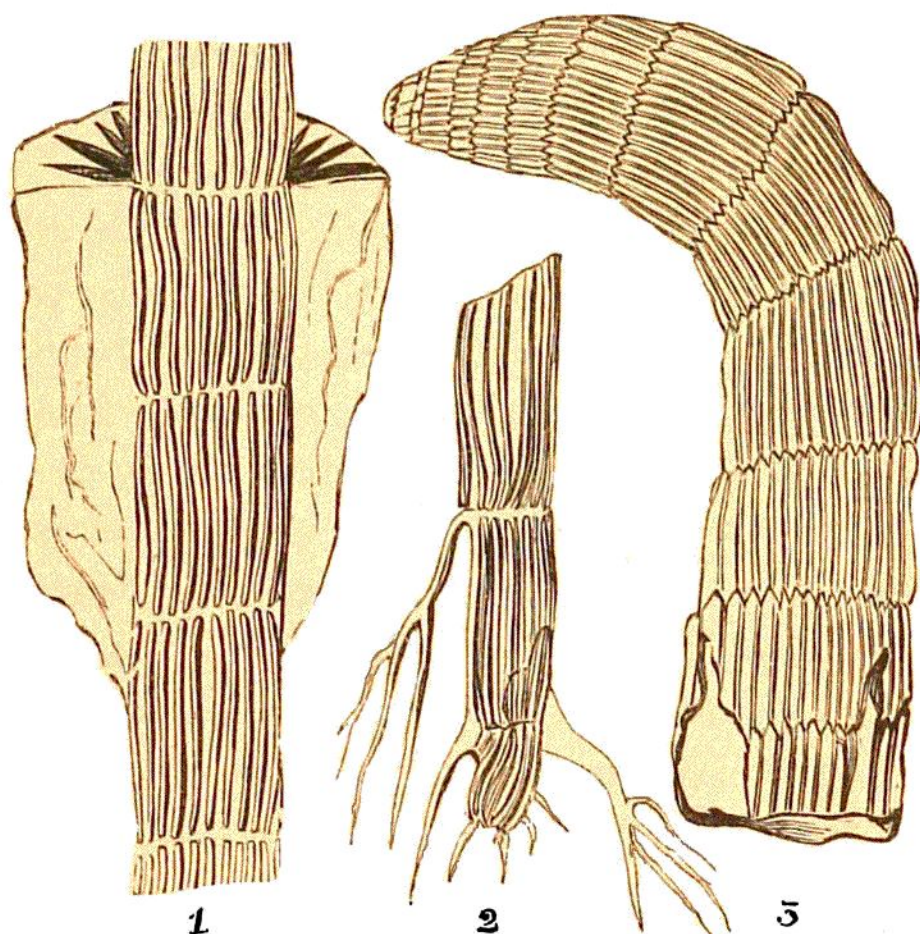


The stem figured *Lign.* 8. fig. 1, has a stellate sheath round one of the joints, and shows the difference between this appendage, and the cylindrical sheaths of the *Equiseta*. This example also proves the importance of preserving and examining the stone that surrounds fossil stems, for



LIGN. 8. CALAMITES, IN COAL SHALE.

Fig. 1.—*Calamites radiata*, with the remains of one of the sheaths. — $\frac{1}{2}$ nat.

2.—Stem, with remains of roots. — $\frac{1}{2}$ nat.

3.—*Calamites approximata*, showing the cryptogamous head and curved upper extremity of the plant. — $\frac{1}{5}$ nat.

without attention to this precaution in the present instance, no knowledge would have been obtained