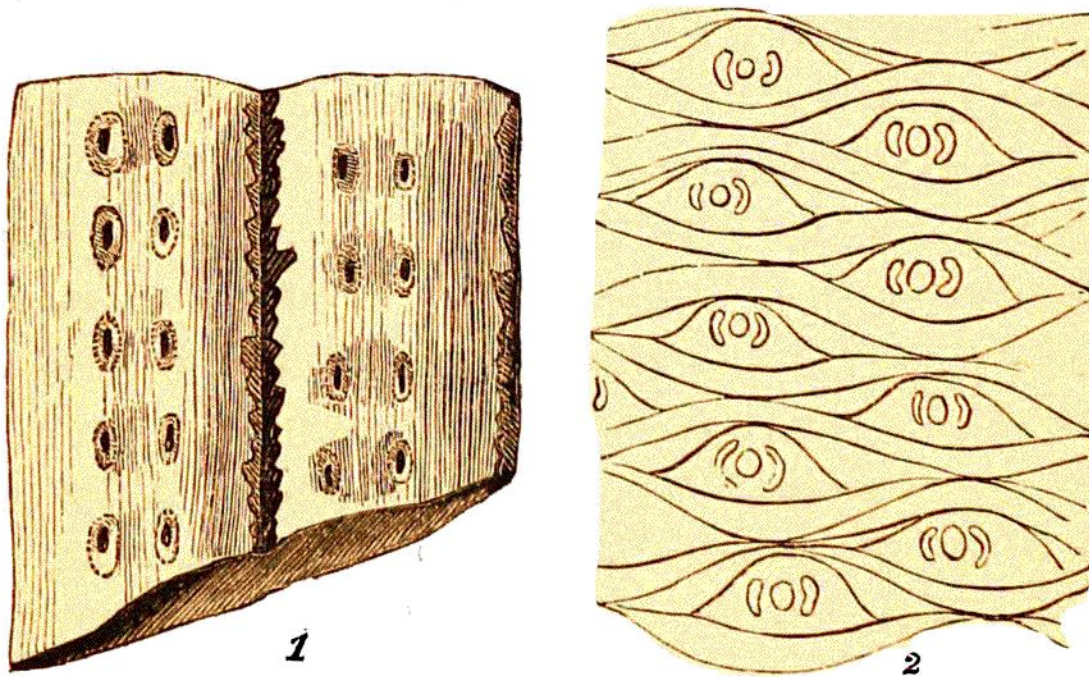


a mile, twenty trees were observed by Mr. Trevelyan, in 1816 (*Bd.* p. 470.). The coal-pit at St. Etienne, in France, described by M. Alex. Brongniart, is celebrated for affording an example of this phenomenon (*Ly.* II. p. 137. *Wond.* p. 629.); but the positions of many of those stems are inclined at various angles, and their roots implanted in different beds, so that the perpendicularity of the erect trees is probably accidental (*Bd.* p. 471.).



LIGN. 24. SIGILLARIÆ; in Coal-shale.

Fig 1.—A specimen deprived of its carbonaceous bark, except in the interstices of the channels, and showing pits left by the external scars.

2.—The markings of *S. Defranci*. (*Vég. Foss. Br.*)

But the most remarkable instance hitherto observed, is on the southern shore of the Bay of Fundy, in Nova Scotia, where the cliffs, which are about two hundred feet high, are composed of carboniferous strata, consisting of coal, clay, grit, and