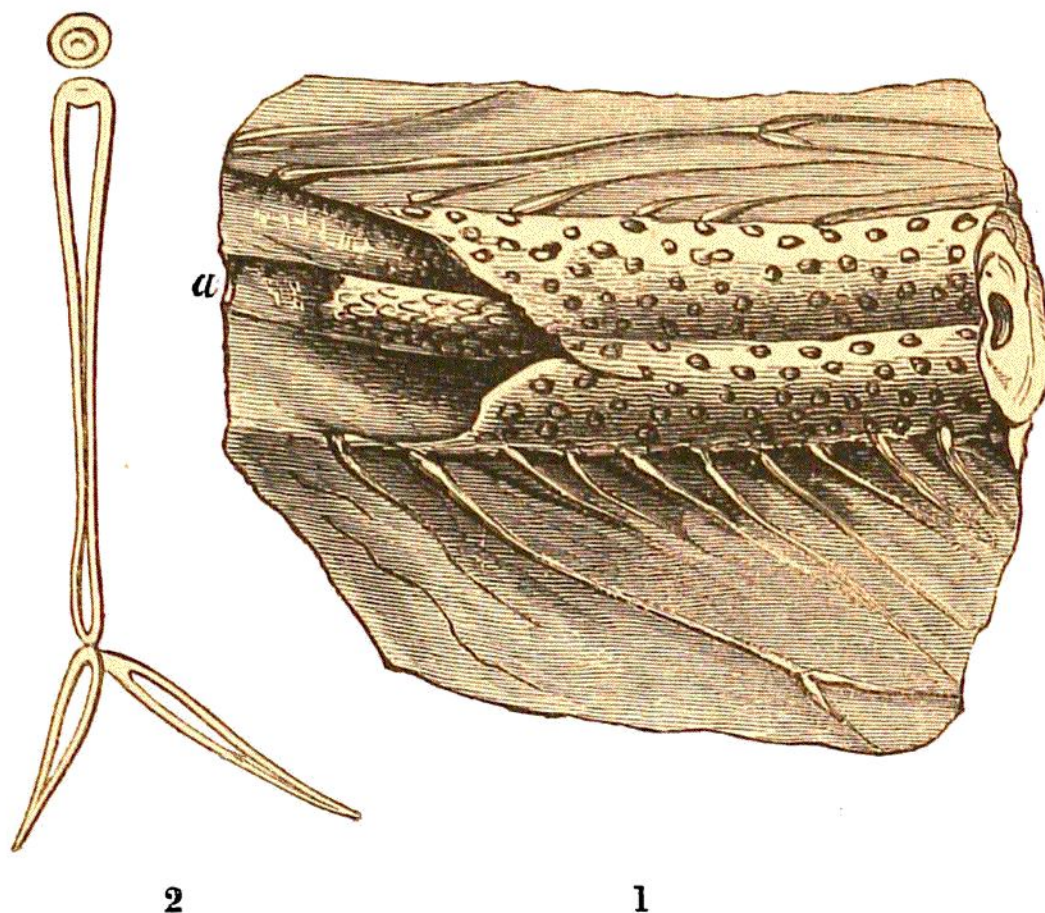


the outer surface, that runs parallel with it. This internal body is often loose, and may be removed; its surface is covered with interrupted, irregular, longitudinal ridges, which leave corresponding depressions on the walls of the cavity in which it was contained. The following lignograph represents a fragment with the characters above described.



LIGN. 27. STIGMARIA FICOIDES. Carb. Derbyshire.

Fig. 1.—Portion of a stem, with some of the processes (formerly considered as leaves) extending into the surrounding clay. The internal body is seen at *a*; and the corresponding groove, on the portion of external surface that remains.

2.—An outline of one of the radicles or fibres, with a tubercle to show the mode of attachment to the root, which is that of a ball and socket joint.