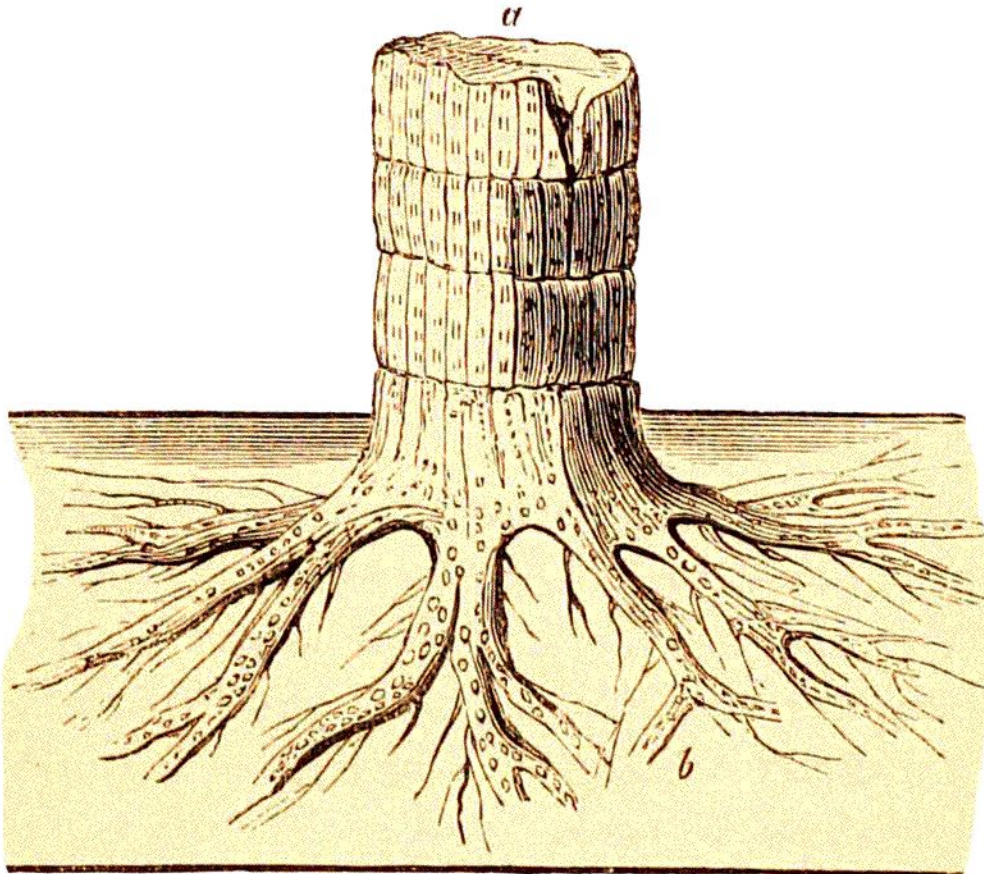


between the stems or branches of a dicotyledonous tree, in which the woody cylinder is associated internally with bundles of medullary tissue, and the roots of the same tree that are destitute of them. Part of a vascular bundle from the woody tissue of a *Stigmaria*, seen by a high power and transmitted light, is figured Plate V. fig. 6; the smooth interspaces are composed of cellular tissue.



LIGN. 29. STEM AND ROOTS OF A SIGILLARIA.

*Coal mine, near Liverpool.*

- a.* The trunk of the tree, traversing a bed of coal.
- b.* The roots (*Stigmaria*) spreading out in the under-clay.

This opinion of the eminent French savant, has very recently been confirmed by the discovery, at St. Helen's, near Liverpool, in Coal strata, of an