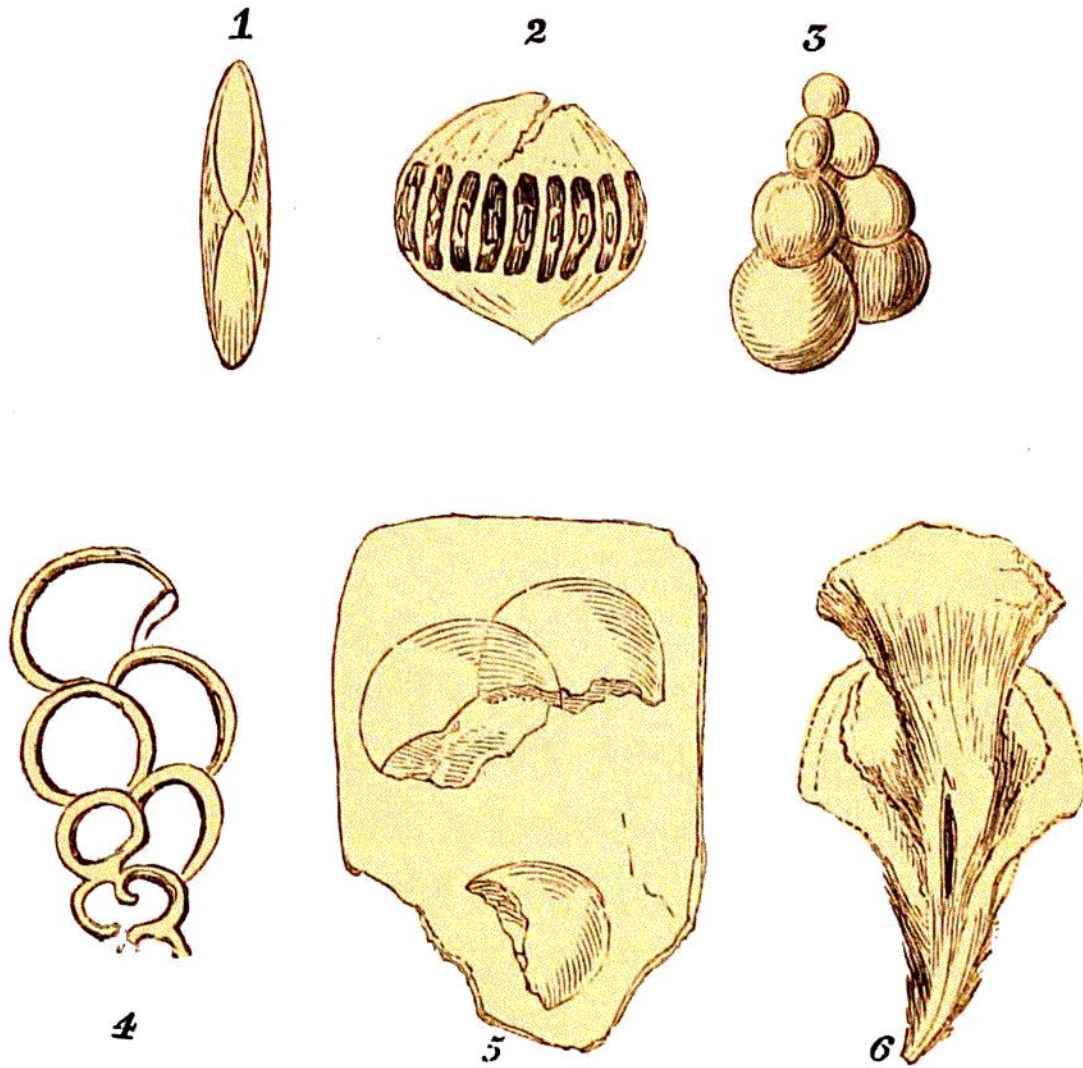


spiral univalve shell, as in *Lign.* 52, fig. 4, which is a remarkably distinct specimen in flint. Like the *Rotalia*, all the chambers were occupied by the viscera



LIGN. 52. MICROSCOPIC FOSSILS IN FLINT AND CHALK: *inv.* $\times \times$.

Fig. 1.—Fore-shortened view of a *Rotalia*, (resembling the recent *Nonionina*).

2.—*Pyxidicula Leeana* (G. A. M.) in Boulogne marble.

3.—*Textularia globulosa*, in marl: Mount of Olives.

4.—*Textularia*, in flint: Surrey.

5.—*Pyxidicula Readeana*, (G. A. M.), in flint: Brighton.

6.—Unknown fossil, in flint. Cabinet of Mr. Hamlin Lee.

of the animal. In many specimens the appearance is that of a cluster of globules, spirally entwined, and