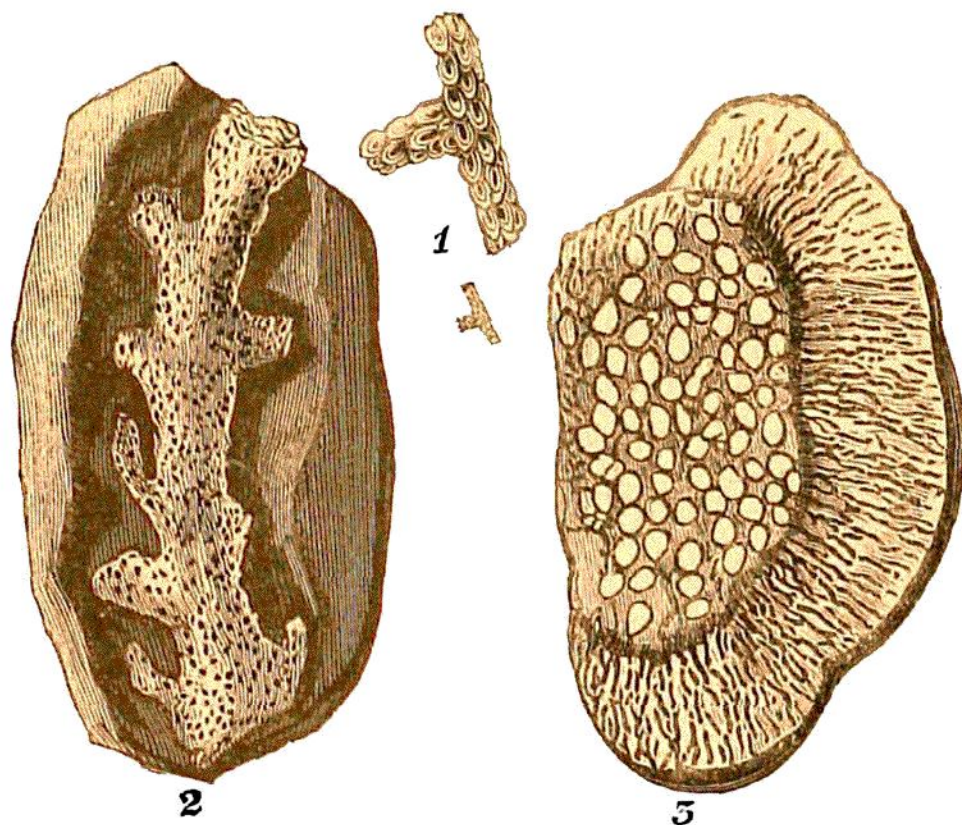


played; but in many examples it has perished, and the cavity thus produced is partially filled with stalactitical chalcedony, or lined with quartz crystals: these flints vary in magnitude from the size of a walnut to that of an orange.



LIGN. 54. CORAL AND SPONGES IN CHALK AND FLINT. *Sussex*:

Fig. 1.—RETEPORA. The lower figure *nat. size*. Chalk, near Chichester. (Mr. Walter Mantell.)

2.—Fragment of a branched Sponge in the hollow of a flint. *South Downs*.

3.—SIPHONIA MORRISIANA.* (G. A. M.) A transverse polished section of a pebble, from *Brighton beach*.

* The specific name of this Siphonia is to commemorate the important services rendered to British geology, by the author of the "*Catalogue of British Fossils*;" John Morris, Esq.