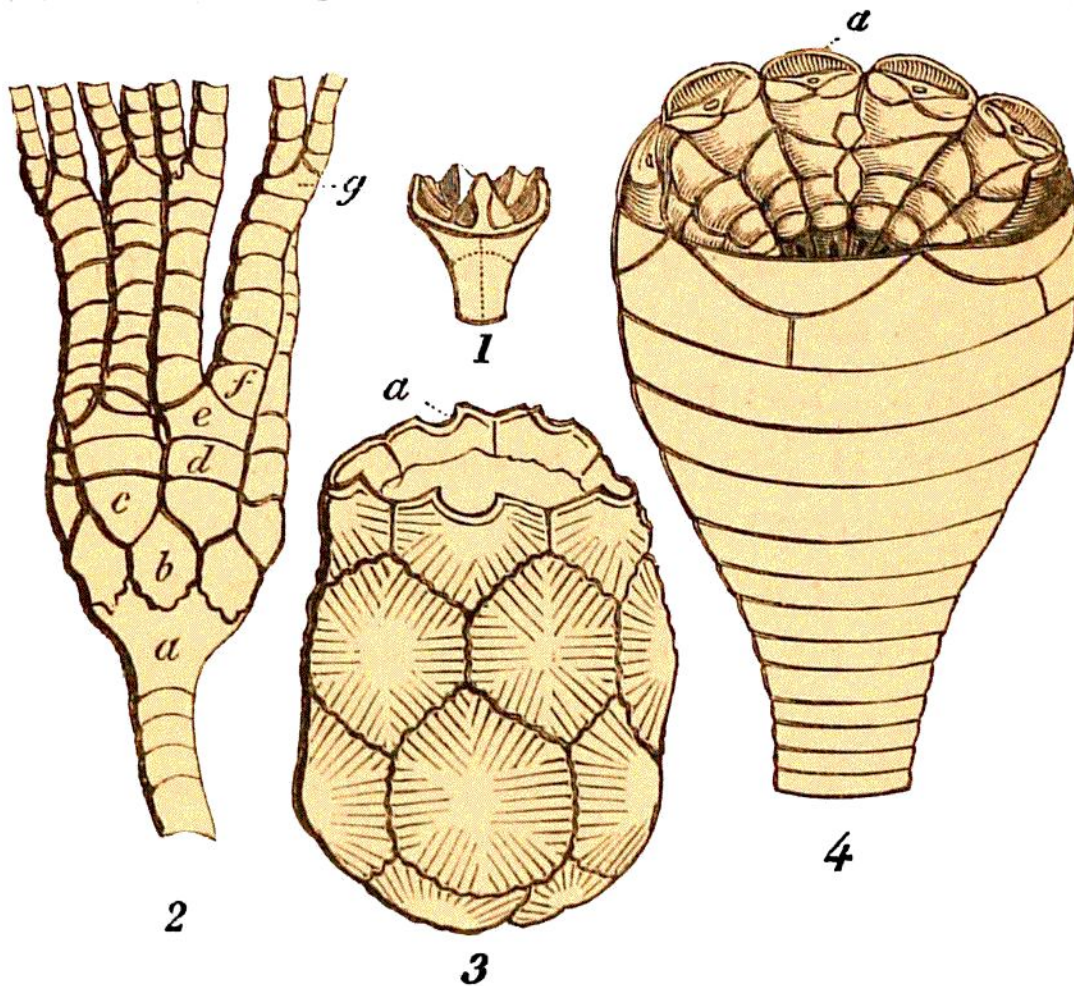


panded and permanently fixed. The receptacle is pyriform, and generally found deprived of the arms,



LIGN. 70.

FOSSIL CRINOIDEA.

Fig. 1.—EUGENIACRINITES. *Switzerland.*

2.—CYATHOCRINITES PLANUS. *Mountain Limestone.*

a. Basal plate of the *pelvis*, or basin.

b. One of the plates composing the walls of the *pelvis*.

c. Costal plate.

d. Intercostal plate.

e. Scapula, or ossiculum that receives the arm.

f. First ossiculum of the arm.

3.—MARSUPITES MILLERI (G. A. M.). *Chalk, Brighton.*

a. The semilunar cavity for the arms.

4.—APIOCRINITES ROTUNDUS, or *Pear-Encrinite*. *Bradford.*

a. First ossicula of the arms.

as in fig. 4, *Lign. 70*. The cavity is closed by small polygonal plates, except in the centre, where the