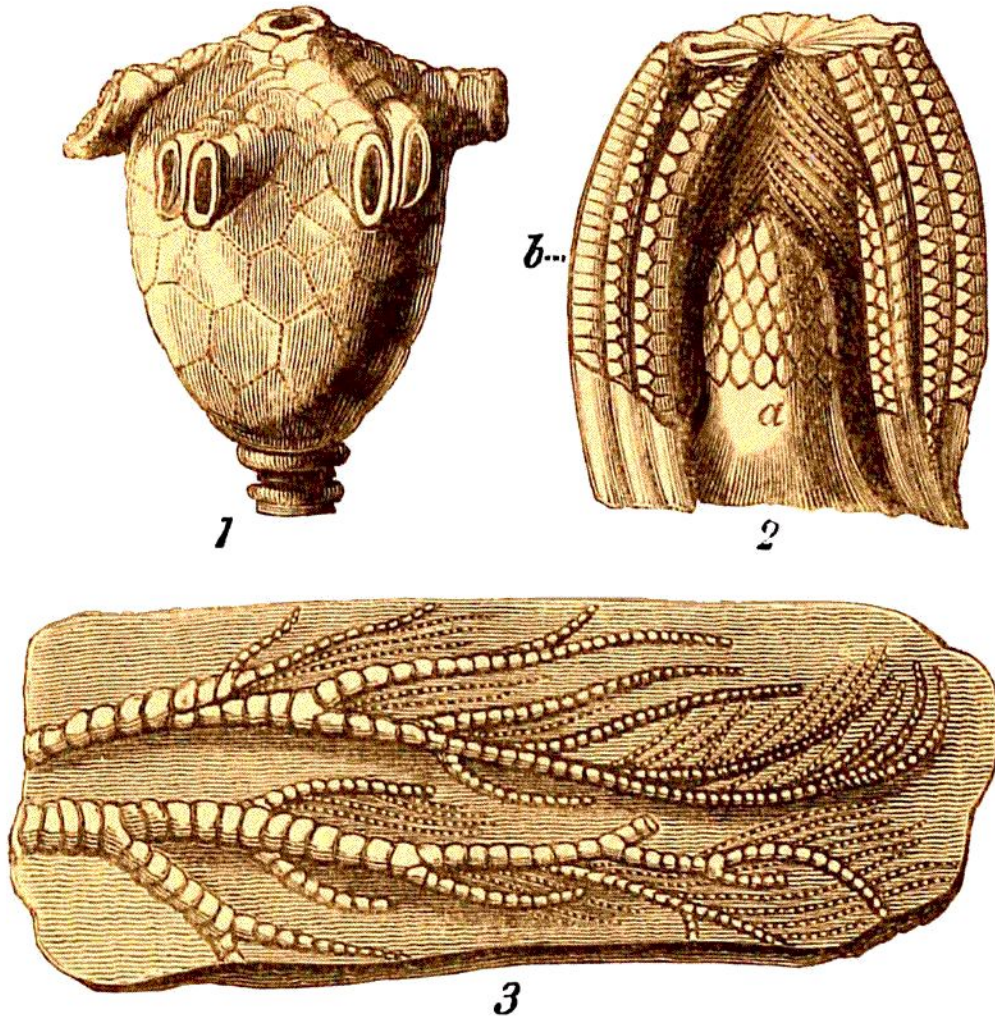


the arms remaining, and the dome-like superior termination, and the mouth; this is the usual state in which the fossils are obtained. Fig. 2 shows an Actinocrinite in which part of the brim of the pelvis



LIGN. 72. ACTINOCRINITES, OR NAVE ENCRINITES.

Fig. 1.—ACTINOCRINITES PARKINSONI. (*Org. Rem.* II. Pl. 17.)

2.—Section of an ACTINOCRINITE. (*Miller's Crinoideæ*, Pl. II.)

*a.* Proboscideal protrusion of the plate and integument.

*b.* Sections of the folded or closed tentacula.

3.—Arms of a Pentacrinite, on Lias-shale: *Lyme Regis*.

and of the arms has been removed in front, while a portion of the closed arms remains behind; in the middle the central plates are prolonged into a proboscideal form; it is from Mr. Miller's work, and