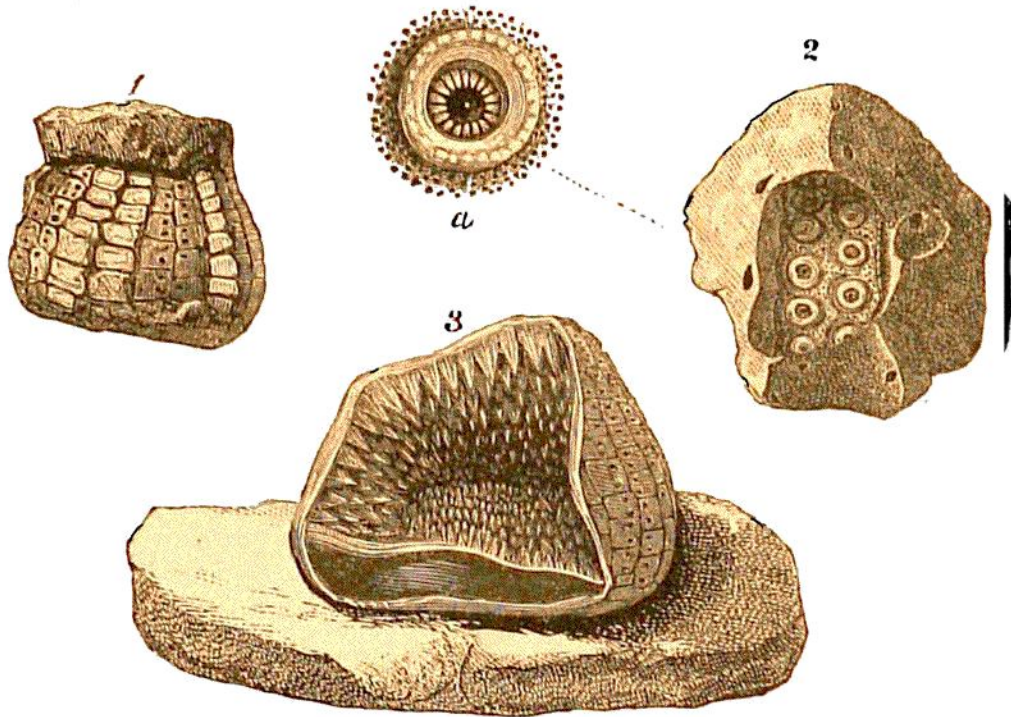


occurs in the Cretaceous strata of the Alps, and in the Chalk marl of Sussex. It is *Nucleolites castanea* of M. Brongniart (*Lign.* 81.).

ANANCHYTES (*helmet-shaped Echinite*) **OVATUS.**
Lign. 79, fig. 2.—This genus is the most charac-



LIGN. 82. ECHINITAL REMAINS IN FLINT. *Chalk. Lewes.*

(One-third the natural size.)

Fig 1.—Cast of *Ananchytes*, showing the form of the plates.

2.—Imprint of a segment of a *Cidarite* on a pebble.

a.—One of the impressions of a spinous tubercle: *nat.*

3.—Portion of an *Ananchyte*, having the cavity covered at the bottom with flint, and above with crystals of carbonate of lime.

teristic of all the echinites of the upper chalk, and has not been found in any other formation. The *Ananchytes* are readily distinguished by their elevated, helmet-like form; by the elliptical vent