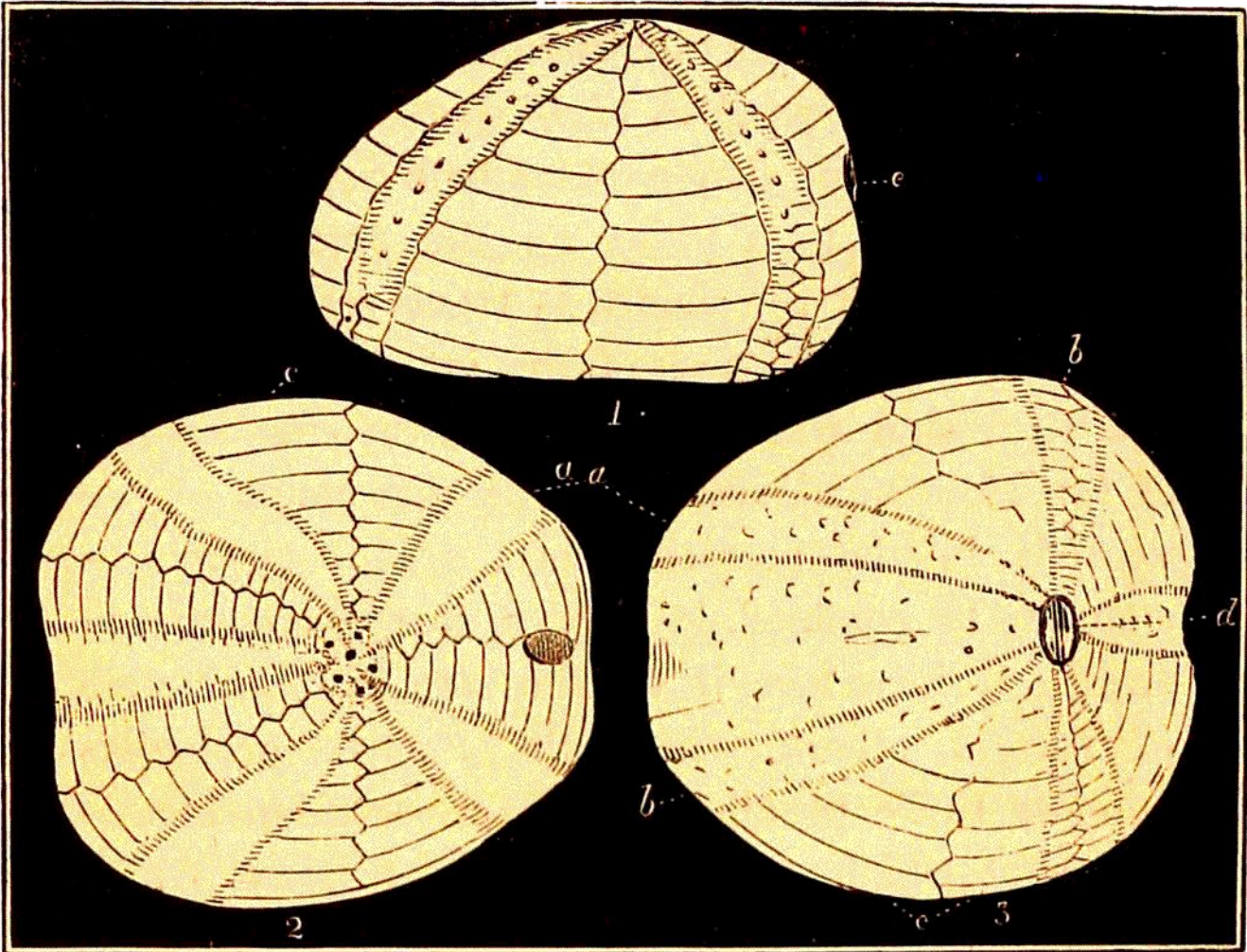


the lip. The vent is terminal, and placed above the margin. There are but four ambulacra, and



LIGN. 84. SPATANGUS COMPLANATUS. *Chalk-marl. Hamsey.*

Fig. 1.—Profile.

2.—View of the summit, showing the vent at the side.

3.—View of the base, displaying the situation of the mouth, and the union of the five ambulacra; their pores are not introduced in figs. 2 and 3.

*a.* The narrow porous divisions of the shell, termed AMBULACRA.

*b.* Interambulacral spaces.

*c.* AREÆ, or spaces covered by the wide plates.

*d.* The mouth.

*e.* The vent, or outlet.

these are incomplete, and in some species petaloid, and situated in deep dorsal furrows.