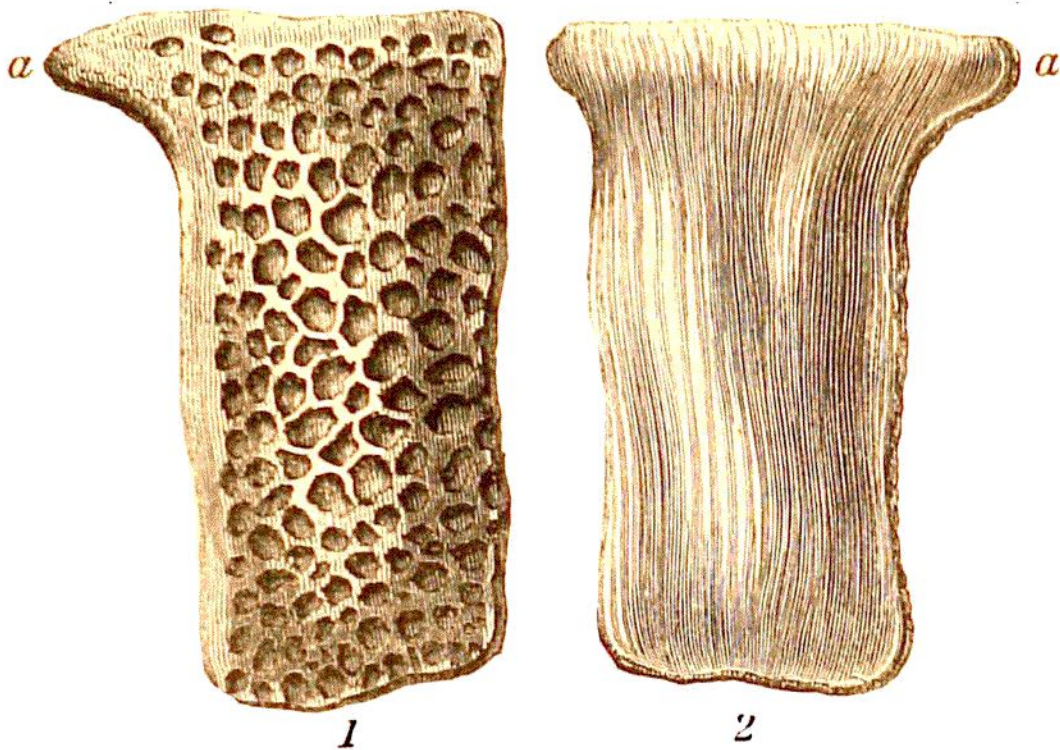


covered with dermal scutes, consisting of sixteen or eighteen transverse rows; and there are six longitudinal series, which extend down the back. These bones are corrugated or pitted on their upper surfaces; a structure adapted for the firm adhesion of the scaly integument. Detached bones possessing this character often occur in the Wealden strata;



LIGN. 139. DERMAL BONE OF THE SWANAGE CROCODILE: $\frac{1}{3}$ nat.
Wealden.

(GONIOPHOLIS CRASSIDENS.)

Fig. 1.—The external aspect.

2.—The inner surface.

a. The lateral connecting process.

and the first fragments found were supposed by me to belong to the soft-skinned turtles (*Trionyxes*);